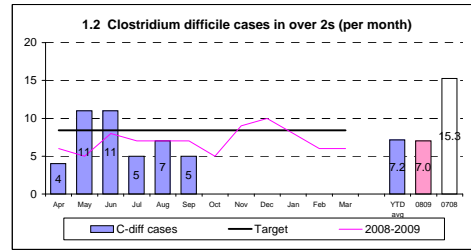
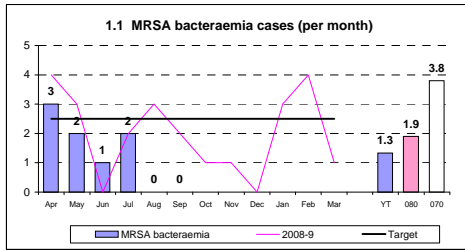


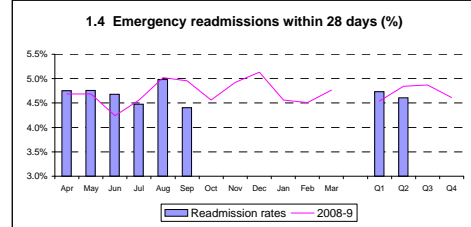
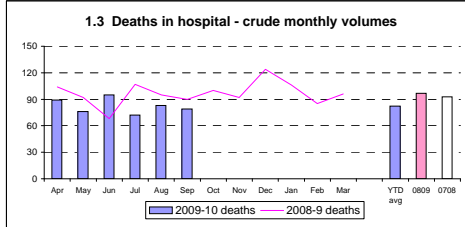
Trust-level: Performance indicators

[Home](#)

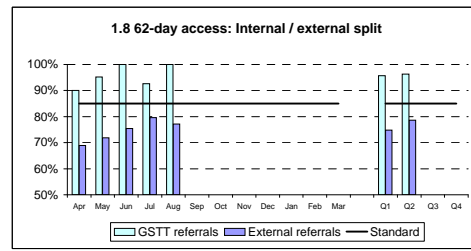
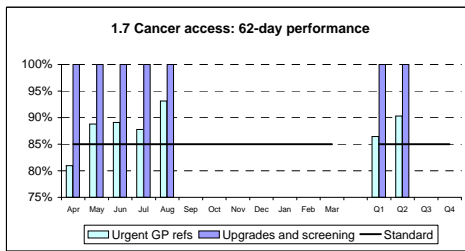
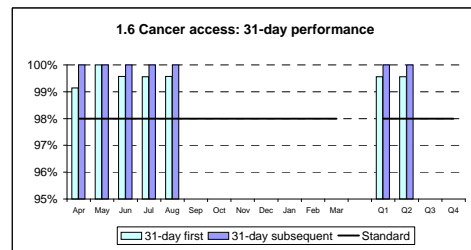
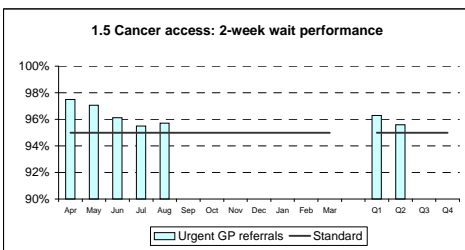
Infection control



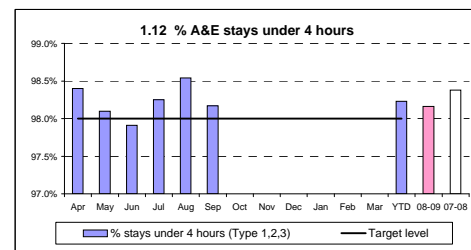
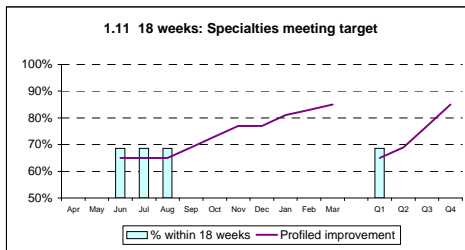
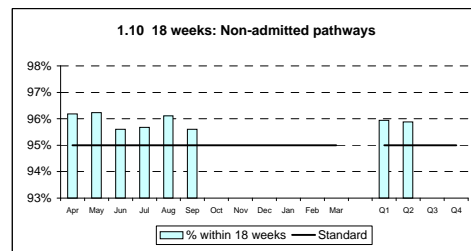
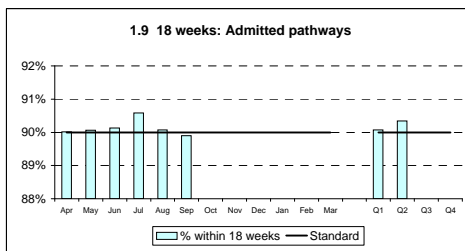
Clinical indicators



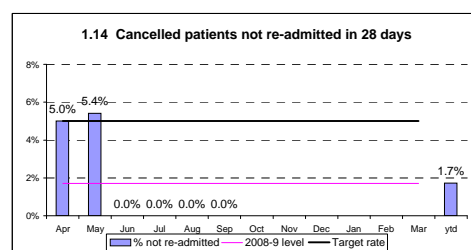
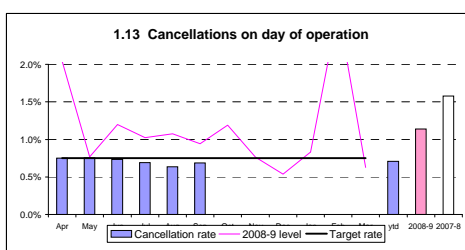
Cancer access



18 weeks pathway management and A&E



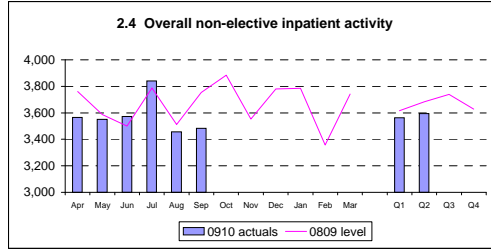
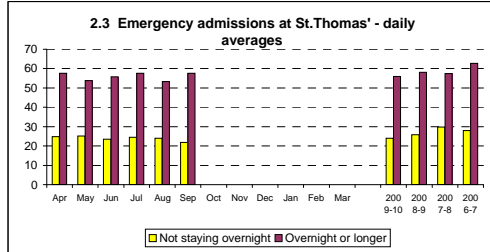
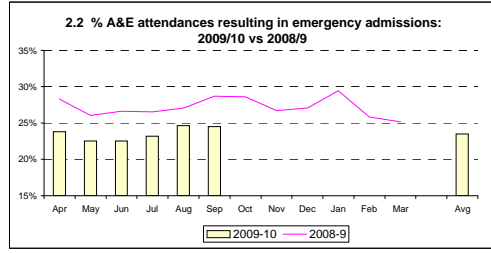
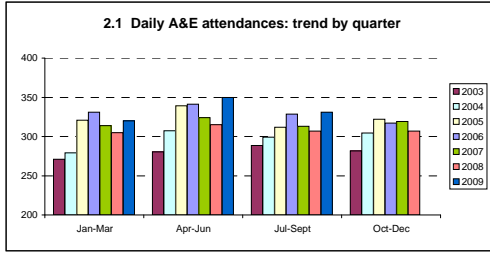
Theatre cancellations



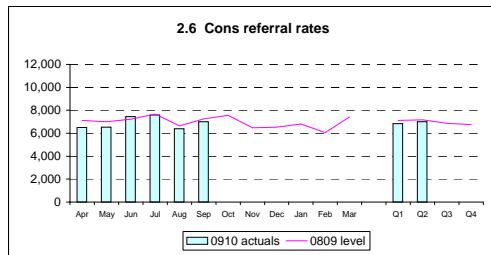
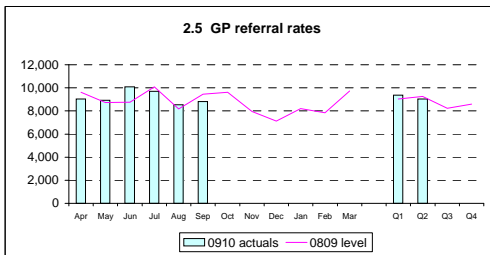
Trust-level: Overall activity levels

[Home](#)

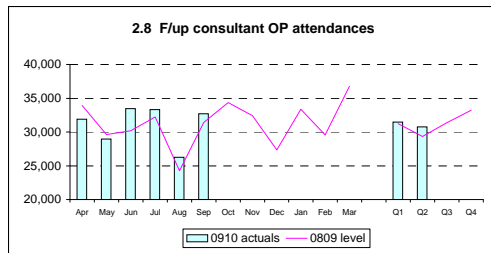
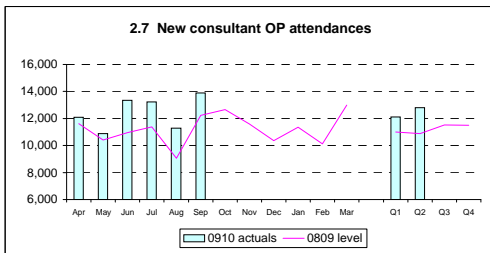
A&E and non-elective activity



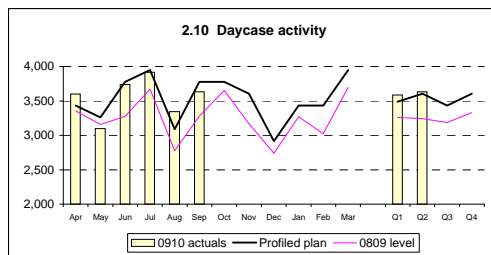
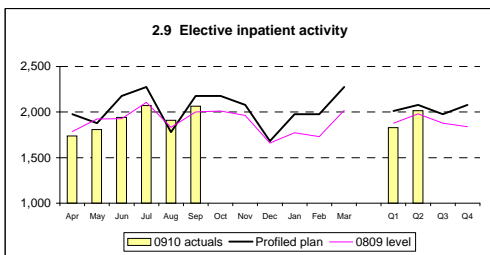
Referral rates



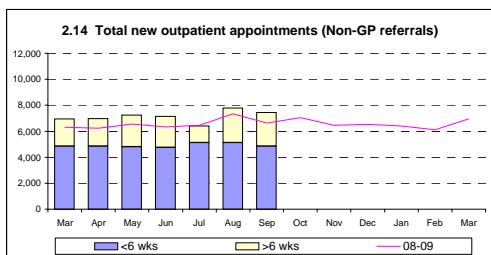
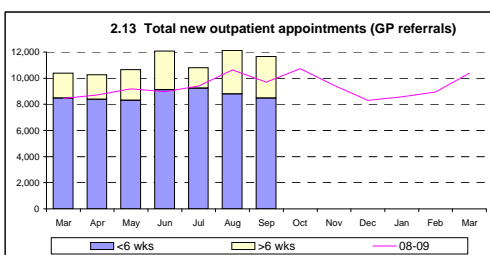
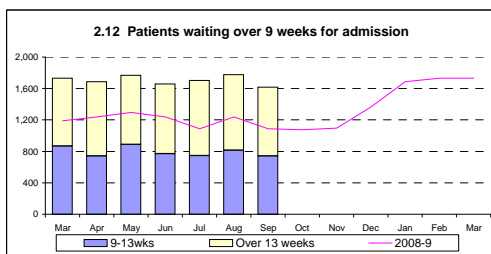
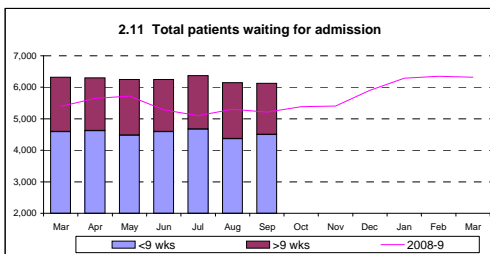
Outpatient activity



Elective activity



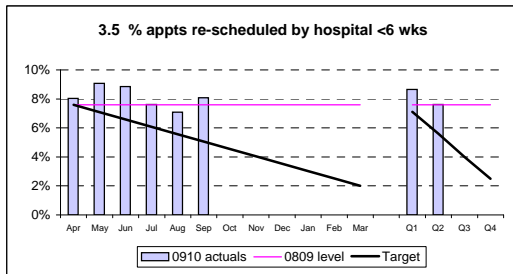
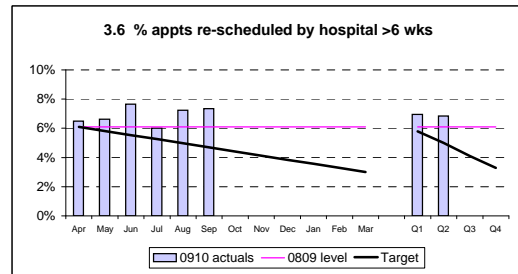
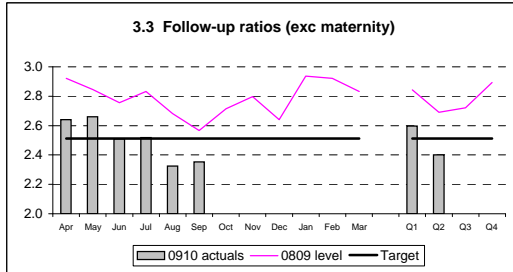
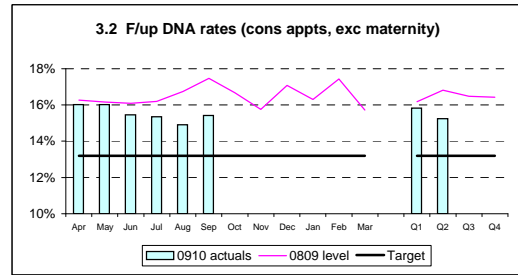
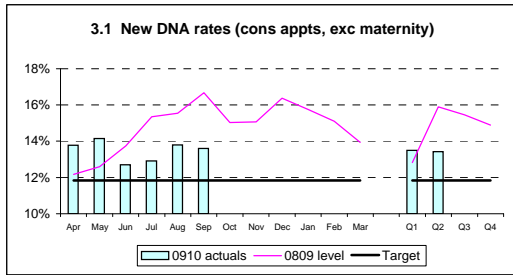
Waits for stages of treatment



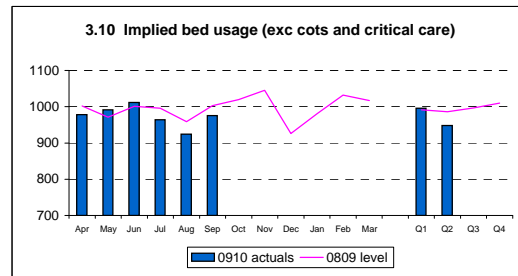
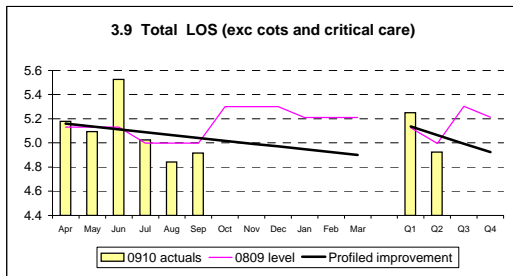
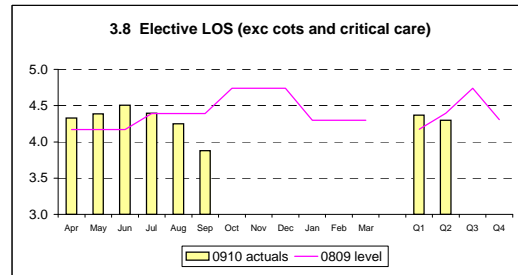
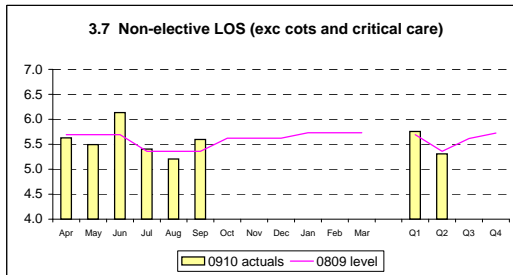
Trust-level: Productivity indicators

Home

Outpatient management



Length of stay management



Theatres

