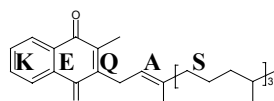


Vitamin K External Quality Assurance Scheme Results

Batch: 22



The Vitamin K External Quality Assurance Scheme

Your results, Z score and outlier test**Vitamin K concentration (ng/ml)**

	Serum A	Serum B	Ethanollic standard
ALTM	na	2.35	22.51

Z scores

Z < 1 Good
1 < Z < 2 Satisfactory
2 < Z < 3 Questionable
Z > 3 Unsatisfactory

Result of outliers test

	Serum A	Serum B	Ethanollic standard
	na	Negative	Negative

Key to abbreviations

na: not applicable

BLD: Below limit of detection (approximately 0.03 ng/ml)

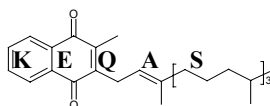
SD: Standard deviation

CV: Correlation of variance

Vitamin K Laboratory
Haemophilia Reference Centre St. Thomas' Hospital
London SE1 7EH
Email: domonic.harrington@gstt.sthames.nhs.uk

Vitamin K External Quality Assurance Scheme Results

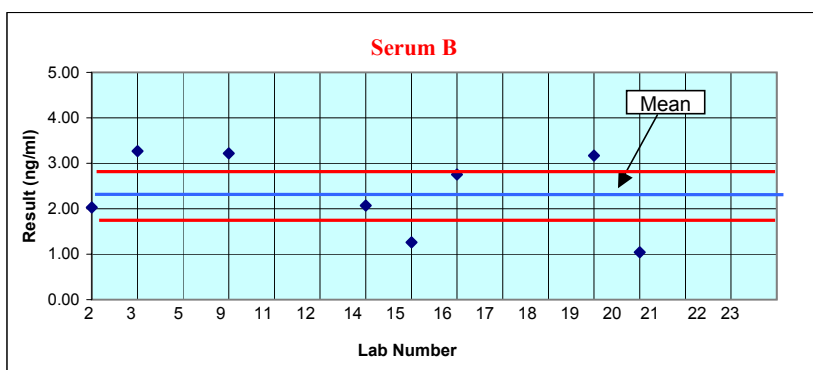
Batch: 22



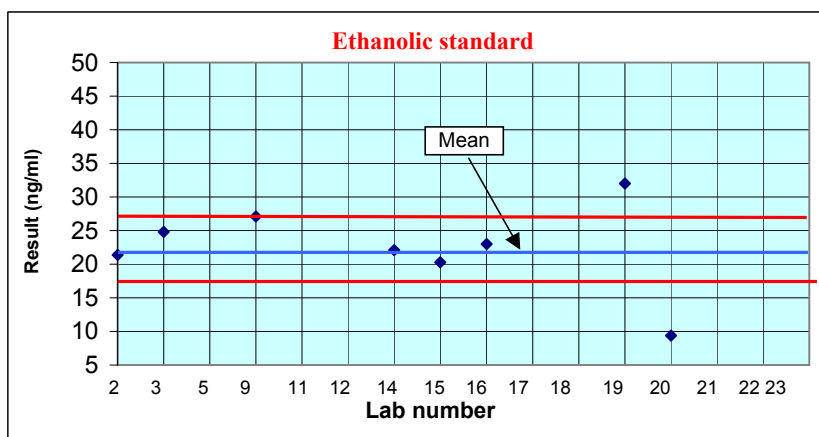
The Vitamin K External Quality Assurance Scheme

All laboratories results and targets

Lab	Serum A (ng/ml)	Serum B (ng/ml)	EtOH std (ng/ml)
2	BLD	2.03	21.38
3	0.14	3.27	24.8
5			
9	BLD	3.22	27.10
11			
12			
14	0.046	2.072	22.09
15	0.2	1.26	20.3
16	0.056	2.756	23
17			
18			
19	0.091	3.17	32.02
20	4.01	1.04	9.38
21			
22	240	700	1560
23			
Mean	0.76	2.35	22.51
Median	0.12	2.41	22.55
SD	1.595	0.89	6.50
CV (%)	na	37.77	28.88



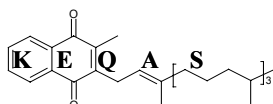
Target Area



Target Area

Vitamin K External Quality Assurance Scheme Results

Batch 22



The Vitamin K External Quality Assurance Scheme

Z scores

Results

Lab	Serum A (ng/ml)	Serum B (ng/ml)	EtOH std (ng/ml)	
2	BLD	2.03	21.38	
3	0.14	3.27	24.8	
5				
9	BLD	3.22	27.10	
11				
12				
14	0.046	2.072	22.09	
15	0.2	1.26	20.3	
16	0.056	2.756	23	
17				
18				
19	0.091	3.17	32.02	
20	4.01	1.04	9.38	
21				
22	240	700	1560	Outliers
23				
Mean	0.76	2.35	22.51	
Median	0.12	2.41	22.55	
SD	1.595	0.89	6.50	
CV	na	37.77	28.88	

Z scores (Target SD = 20%)

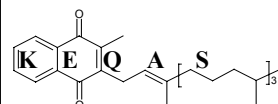
Lab	Serum A	Serum B	EtOH std
2	na	0.68	0.25
3	na	1.95	0.51
9	na	1.84	1.02
14	na	0.60	0.42
15	na	2.32	0.49
16	na	0.86	0.11
19	na	1.74	2.11
20	na	2.79	2.92
22	na	1482.94	341.53

Z scores

Z < 1 Good
 1 < Z < 2 Satisfactory
 2 < Z < 3 Questionable
 Z > 3 Unsatisfactory

Vitamin K External Quality Assurance Scheme Results

Batch 22



The Vitamin K External Quality Assurance Scheme

Distribution of results

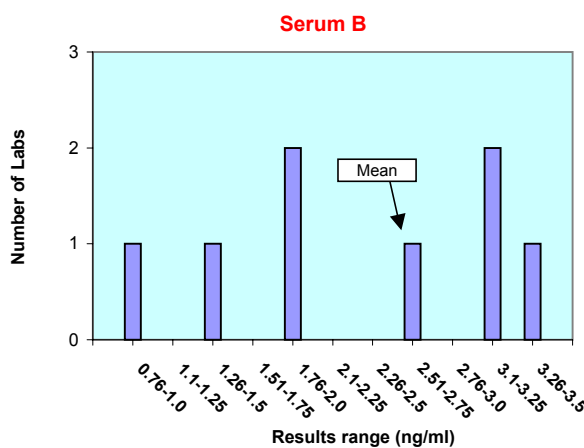
Serum A

Lab	result (ng/ml)	Detected?	Target
2	BLD	No	No
3	0.14	Yes	No
9	BLD	No	No
14	0.046	Borderline	No
15	0.2	Yes	No
16	0.056	Borderline	No
19	0.091	Borderline	No
20	4.01	Yes	No
22	240	Yes	No

The result for serum A is either detected or below the limit of detection. Therefore there is no graph.
LOD= 0.03 ng/ml

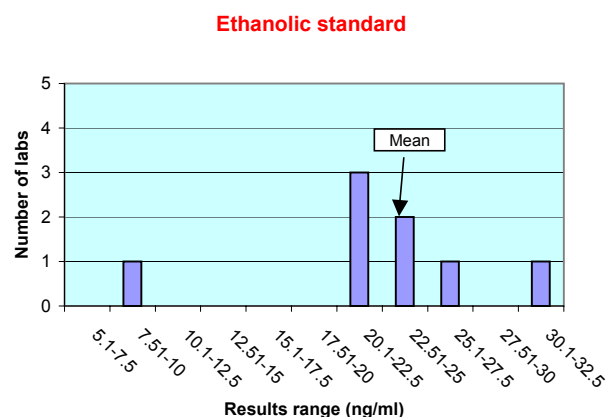
Serum B

Lab	result (ng/ml)	SD	CV(%)
2	2.03	0.36	14.19
3	3.27	0.52	20.33
9	3.22	0.48	18.94
14	2.072	0.33	13.02
15	1.26	0.90	35.63
16	2.756	0.15	6.02
19	3.17	0.45	17.55
20	1.04	1.06	41.76
22	700	493.18	19418.68
Mean =	2.54	0.77	30.31



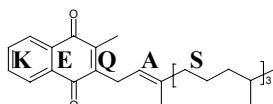
Ethanollic Standard

Lab	result (ng/ml)	SD	CV(%)
2	21.38	0.80	3.55
3	24.8	1.62	7.20
9	27.10	3.25	14.42
14	22.09	0.30	1.32
15	20.3	1.56	6.94
16	23	0.35	1.54
19	32.02	6.73	29.88
20	9.38	9.28	41.24
22	1560	1087.17	4829.99
Mean=	22.51	6.50	28.88



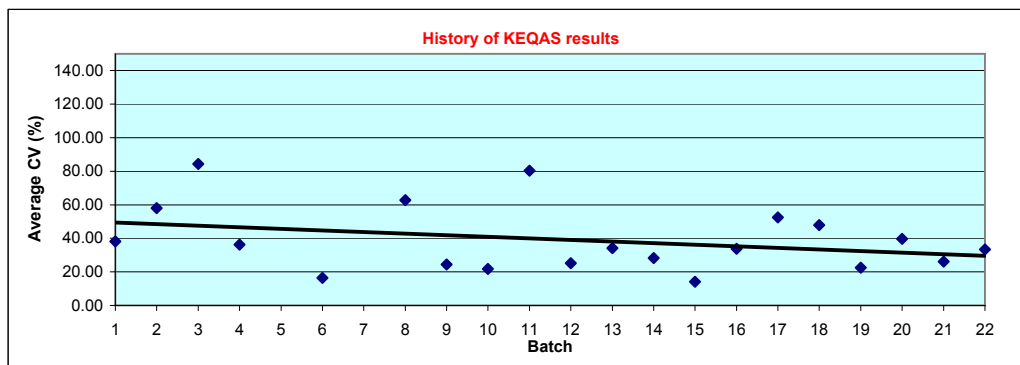
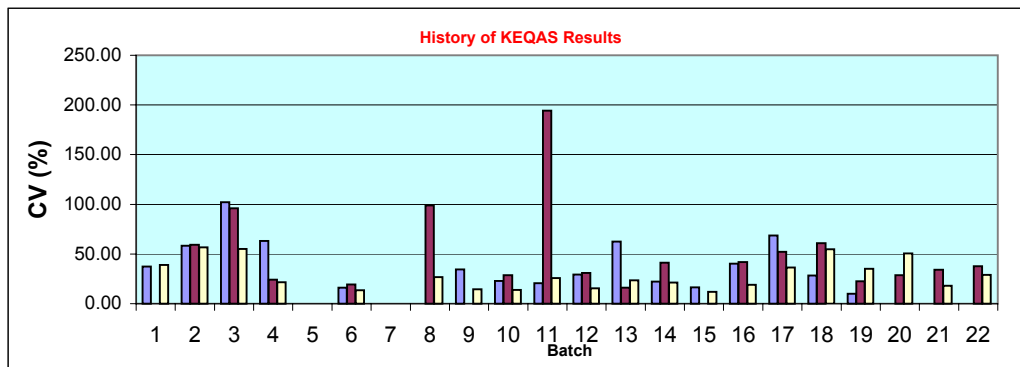
Vitamin K External Quality Assurance Scheme Results

Batch 22



The Vitamin K External Quality Assurance Scheme

All laboratories results history



Overall error (CV) for all labs

Batch	CV (%)			Average CV (%)
	Serum A	Serum B	Ethanollic Standard	
1	37.26	na	39.14	38.20
2	58.31	59.28	56.73	58.11
3	102.07	95.94	55.04	84.35
4	63.04	24.10	21.47	36.20
5				
6	16.08	19.39	13.61	16.36
7				
8	na	98.81	26.71	62.76
9	34.36		14.49	24.43
10	22.85	28.71	13.92	21.83
11	20.69	194.36	25.89	80.31
12	29.24	30.99	15.52	25.25
13	62.58	16.22	23.59	34.13
14	22.32	41.25	21.20	28.26
15	16.37	na	11.92	14.15
16	40.29	41.85	19.05	33.73
17	68.53	52.32	36.33	52.39
18	28.29	60.78	54.75	47.94
19	10.11	22.71	35.02	22.61
20	na	28.77	50.71	39.74
21	na	34.25	18.20	26.23
22	na	37.77	28.88	33.325