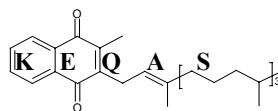


Vitamin K External Quality Assurance Scheme Results

Batch: 23



The Vitamin K External Quality Assurance Scheme

Results, Z score and outlier test

Vitamin K concentration (ng/ml)			
	Serum A	Serum B	Ethanollic standard
Mean Result	6.58	0.37	13.40
Z score	na	na	na

Z scores	
Z < 1	Good
1 < Z < 2	Satisfactory
2 < Z < 3	Questionable
Z > 3	Unsatisfactory

Result of outliers test
There are no outliers in batch 23

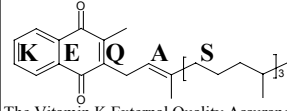
Key to abbreviations

na: not applicable
BLD: Below limit of detection (approximately 0.03 ng/ml)
SD: Standard deviation
CV: Correlation of variance

Vitamin K Laboratory
Haemophilia Reference Centre St. Thomas' Hospital
London SE1 7EH
Email: domonic.harrington@gstt.sthames.nhs.uk
david.card@gstt.sthames.nhs.uk

Vitamin K External Quality Assurance Scheme Results

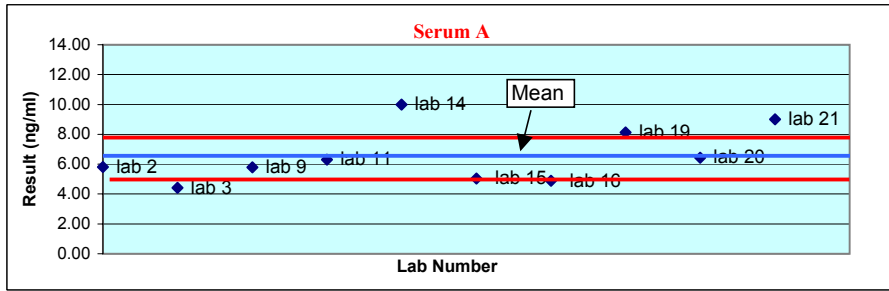
Batch: 23



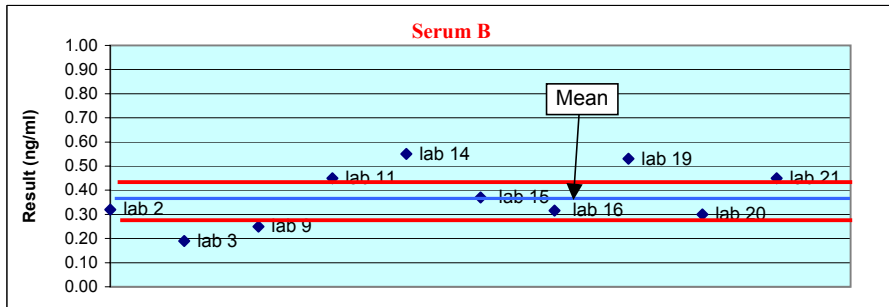
The Vitamin K External Quality Assurance Scheme

All laboratories results and targets

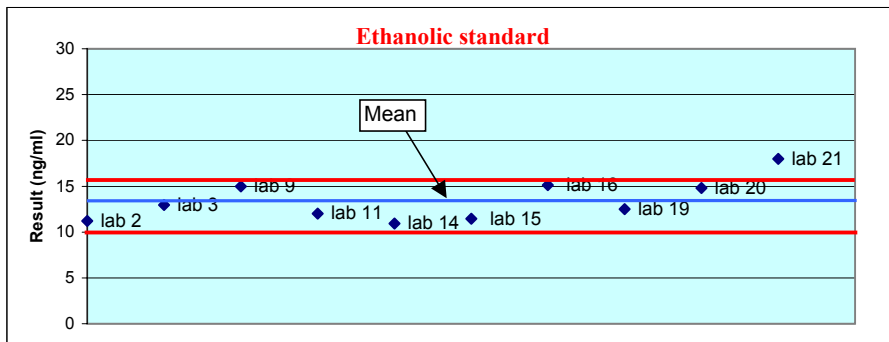
Lab	Serum A (ng/ml)	Serum B (ng/ml)	EtOH std (ng/ml)
lab 2	5.80	0.32	11.22
lab 3	4.41	0.19	12.96
lab 9	5.78	0.25	15.00
lab 11	6.30	0.45	12.00
lab 14	9.99	0.55	10.92
lab 15	5.03	0.37	11.44
lab 16	4.88	0.32	15.12
lab 19	8.13	0.53	12.50
lab 20	6.43	0.30	14.82
lab 21	9.00	0.45	18.00
Mean	6.58	0.37	13.40
Median	6.05	0.35	12.73
SD	1.863	0.12	2.27
CV (%)	28.33	31.99	16.95



Target Area



Target Area

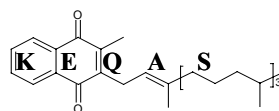


Target Area

Target area = + or - 20% of mean

Vitamin K External Quality Assurance Scheme Results

Batch 23



The Vitamin K External Quality Assurance Scheme

Z scores

Results

Lab	Serum A (ng/ml)	Serum B (ng/ml)	EtOH std (ng/ml)
2	5.80	0.32	11.22
3	4.41	0.19	12.96
9	5.78	0.25	15.00
11	6.30	0.45	12.00
14	9.99	0.55	10.92
15	5.03	0.37	11.44
16	4.88	0.32	15.12
19	8.13	0.53	12.50
20	6.43	0.30	14.82
21	9.00	0.45	18.00
Mean	6.58	0.37	13.40
Median	6.05	0.35	12.73
SD	1.86	0.12	2.27
CV	28.33	31.99	16.95

Z scores (Target SD = 20%)

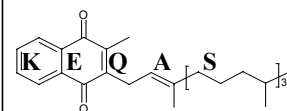
Lab	Serum A	Serum B	EtOH std
2	0.6	0.7	0.8
3	1.6	2.5	0.2
9	0.6	1.6	0.6
11	0.2	1.0	0.5
14	2.6	2.4	0.9
15	1.2	0	0.7
16	1.3	0.8	0.6
19	1.2	2.1	0.3
20	0.1	1.0	0.5
21	1.8	1.0	1.7

Z scores

Z < 1 Good
 1 < Z < 2 Satisfactory
 2 < Z < 3 Questionable
 Z > 3 Unsatisfactory

Vitamin K External Quality Assurance Scheme Results

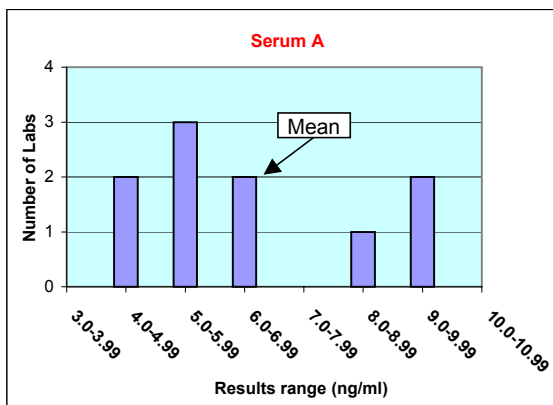
Batch 23



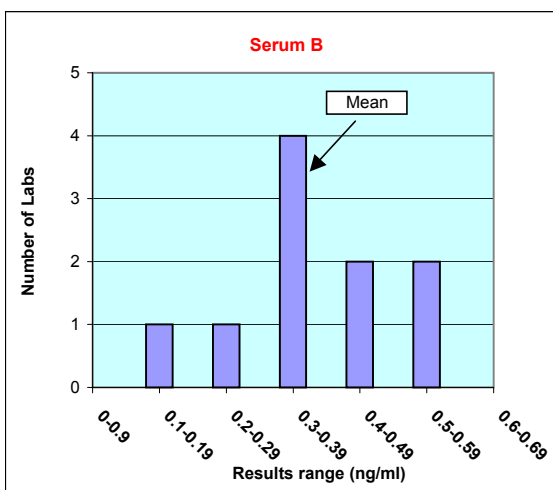
The Vitamin K External Quality Assurance Scheme

Distribution of results

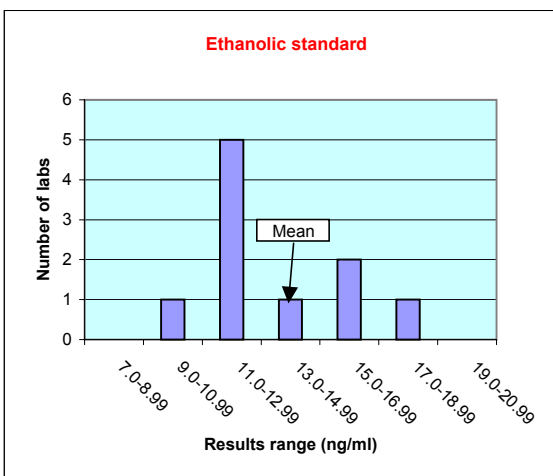
Serum A			
Lab	result (ng/ml)	SD	CV (%)
2	5.80	0.55	8.34
3	4.41	1.53	23.29
9	5.78	0.56	8.55
11	6.30	0.19	2.96
14	9.99	2.41	36.72
15	5.03	1.09	16.62
16	4.88	1.20	18.19
19	8.13	1.10	13.52
20	6.43	0.10	1.56
21	9.00	1.71	26.07
Mean =	6.58	1.05	15.58



Serum B			
Lab	result (ng/ml)	SD	CV (%)
2	0.32	0.04	9.98
3	0.19	0.13	34.65
9	0.25	0.09	23.27
11	0.45	0.05	14.69
14	0.55	0.13	33.67
15	0.37	0.00	0.49
16	0.32	0.04	10.74
19	0.53	0.11	29.87
20	0.30	0.05	13.78
21	0.45	0.05	14.69
Mean =	0.37	0.07	18.58

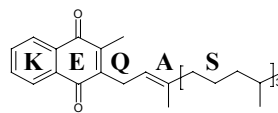


Ethanollic Standard			
Lab	result (ng/ml)	SD	CV (%)
2	11.22	1.54	11.49
3	12.96	0.31	2.31
9	15.00	1.13	8.45
11	12.00	0.99	7.38
14	10.92	1.75	13.08
15	11.44	1.38	10.33
16	15.12	1.22	9.09
19	12.50	0.63	4.74
20	14.82	1.01	7.50
21	18.00	3.25	24.29
Mean =	13.40	1.32	9.87



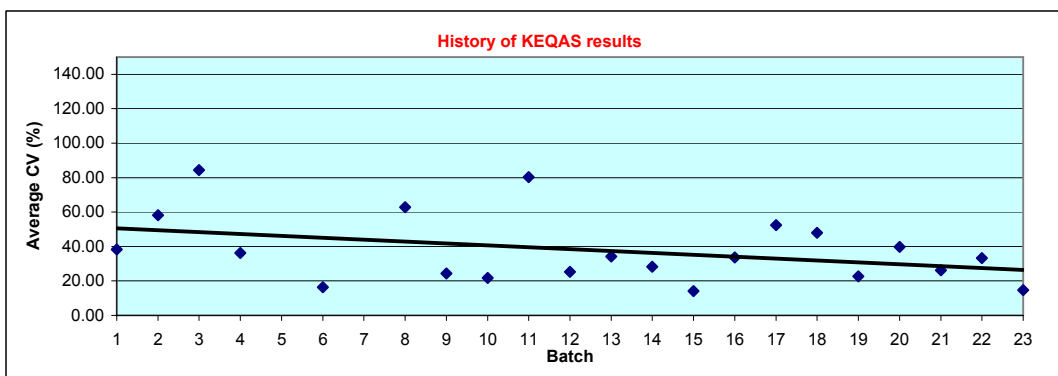
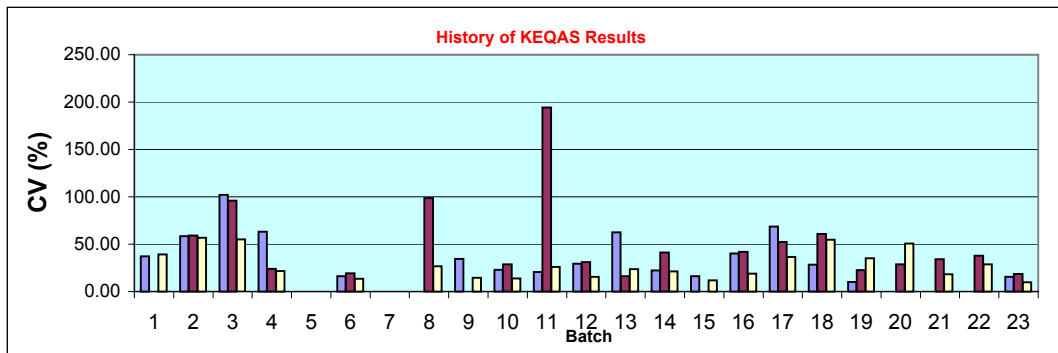
Vitamin K External Quality Assurance Scheme Results

Batch 23



The Vitamin K External Quality Assurance Scheme

All laboratories results history



Overall error (CV) for all labs

Batch	CV (%)			Average CV (%)
	Serum A	Serum B	Ethanollic Standard	
1	37.26	na	39.14	38.20
2	58.31	59.28	56.73	58.11
3	102.07	95.94	55.04	84.35
4	63.04	24.10	21.47	36.20
5				
6	16.08	19.39	13.61	16.36
7				
8	na	98.81	26.71	62.76
9	34.36		14.49	24.43
10	22.85	28.71	13.92	21.83
11	20.69	194.36	25.89	80.31
12	29.24	30.99	15.52	25.25
13	62.58	16.22	23.59	34.13
14	22.32	41.25	21.20	28.26
15	16.37	na	11.92	14.15
16	40.29	41.85	19.05	33.73
17	68.53	52.32	36.33	52.39
18	28.29	60.78	54.75	47.94
19	10.11	22.71	35.02	22.61
20	na	28.77	50.71	39.74
21	na	34.25	18.20	26.23
22	na	37.77	28.88	33.33
23	15.58	18.58	9.87	14.68