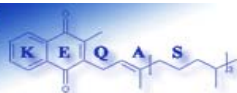


## Batch 25 Results Report

Analysis period: February 2004

Distribution date: 31/03/2004

Human Nutristasis Unit  
The Centre for Thrombosis and Haemostasis  
(Haemophilia Reference Centre)  
St. Thomas' Hospital  
1st floor, North Wing  
London SE1 7EH  
Email: [domonic.harrington@gstt.sthames.nhs.uk](mailto:domonic.harrington@gstt.sthames.nhs.uk)  
[david.card@gstt.sthames.nhs.uk](mailto:david.card@gstt.sthames.nhs.uk)  
Telephone: +44 (0) 20 718 86816



**Summary**

Phylloquinone concentration (ng/ml)			
	Serum A	Serum B	Ethanollic standard
Your Result			
ALTM	0.17	0.39	23.45
Z score			

**Z Scores**

- Z < 1.....Good
- 1 < Z < 2.....Satisfactory
- 2 < Z < 3.....Questionable
- Z > 3.....Unsatisfactory

Result of outliers test			
	Serum A	Serum B	Ethanollic standard
<b>Two outliers identified in batch 25</b>			

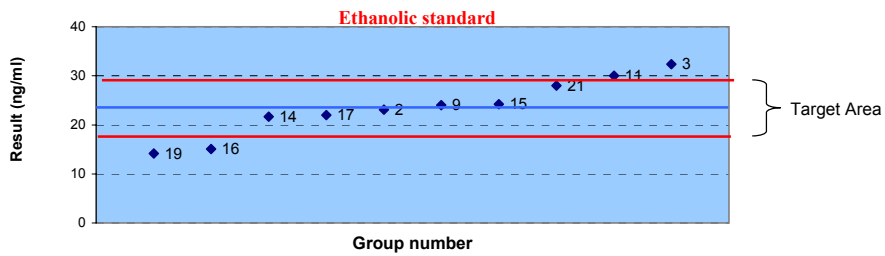
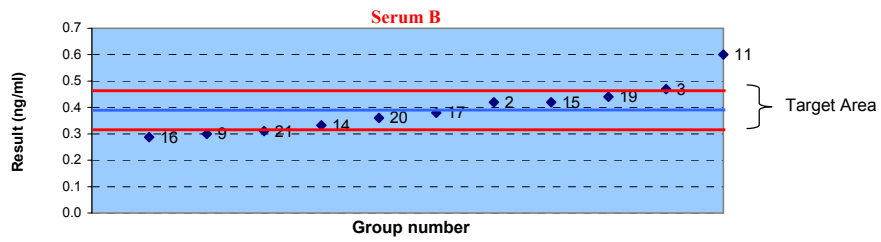
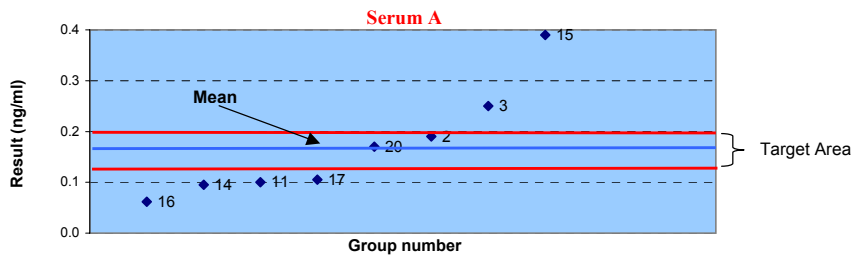
**Key to abbreviations**

na: not applicable
BLD: Below limit of detection (approximately 30 pg/ml)
SD: Standard deviation
CV: Coefficient of variance
ALTM: All laboratories' trimmed mean
Target area = + or - 20% of ALTM



Results and targets

Group	Serum A (ng/ml)	Serum B (ng/ml)	EtOH std (ng/ml)
2	0.190	0.420	23.120
3	0.250	0.470	32.380
9	BLD	0.300	24.000
11	0.100	0.600	30.000
14	0.095	0.332	21.650
15	0.390	0.420	24.200
16	0.062	0.288	15.060
17	0.105	0.380	22.000
19	<b>Outlier 2.030</b>	0.440	14.130
20	0.170	0.360	<b>65.000 Outlier</b>
21	BLD	0.310	28.000
ALTM	0.17	0.39	23.45
Median	0.14	0.38	23.56
SD	0.11	0.09	5.84
CV (%)	63.42	23.34	24.90





**Z scores**

Group	<b>Results</b>		
	Serum A (ng/ml)	Serum B (ng/ml)	EtOH std (ng/ml)
2	0.190	0.420	23.120
3	0.250	0.470	32.380
9	BLD	0.300	24.000
11	0.100	0.600	30.000
14	0.095	0.332	21.650
15	0.390	0.420	24.200
16	0.062	0.288	15.060
17	0.105	0.380	22.000
19	<b>Outlier 2.030</b>	0.440	14.130
20	0.170	0.360	<b>65.000 Outlier</b>
21	BLD	0.310	28.000
ALTM	0.17	0.39	23.45
Median	0.14	0.38	23.56
SD	0.11	0.09	5.84
CV (%)	63.42	23.34	24.90

Z scores

Group	Serum A	Serum B	EtOH std
2	0.58	0.35	0.07
3	2.34	0.98	1.90
9	na	1.18	0.12
11	2.06	2.64	1.40
14	2.21	0.77	0.38
15	6.45	0.35	0.16
16	3.18	1.33	1.79
17	1.92	0.16	0.31
19	54.62	0.60	1.99
20	0.01	0.42	8.86
21	na	1.05	0.97

$Z = 5 \cdot (X_i - X) / X$

**Z Scores**

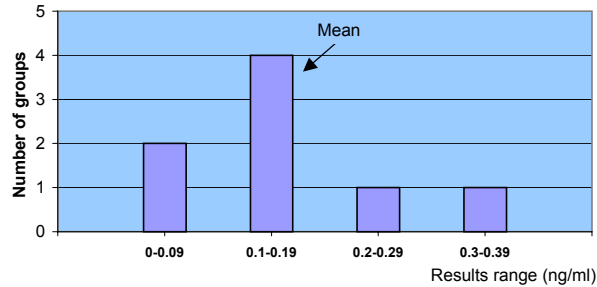
- Z < 1.....Good
- 1 < Z < 2.....Satisfactory
- 2 < Z < 3.....Questionable
- Z > 3.....Unsatisfactory



Distribution of results

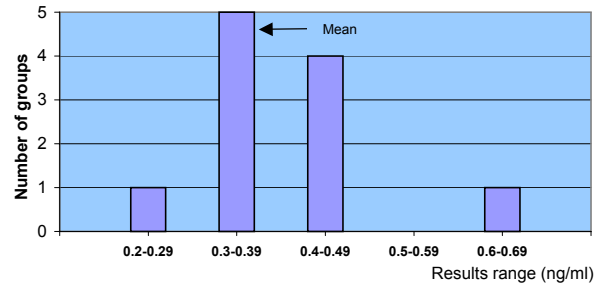
Serum A

Group	Result (ng/ml)	SD	SD (%)
2	0.190	0.01	8.20
3	0.250	0.06	33.12
9	BLD	na	na
11	0.100	0.05	29.18
14	0.095	0.05	31.25
15	0.390	0.16	91.27
16	0.062	0.08	44.96
17	0.105	0.05	27.10
19	2.030	1.32	772.42
20	0.170	0.00	0.10
21	BLD	na	na
Mean	0.170		



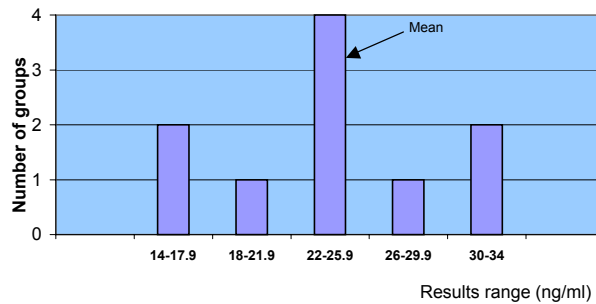
Serum B

Group	Result (ng/ml)	SD	SD (%)
2	0.420	0.02	4.91
3	0.470	0.05	13.91
9	0.300	0.07	16.70
11	0.600	0.15	37.32
14	0.332	0.04	10.93
15	0.420	0.02	4.91
16	0.288	0.07	18.86
17	0.380	0.01	2.29
19	0.440	0.03	8.51
20	0.360	0.02	5.89
21	0.310	0.06	14.90
Mean	0.393		



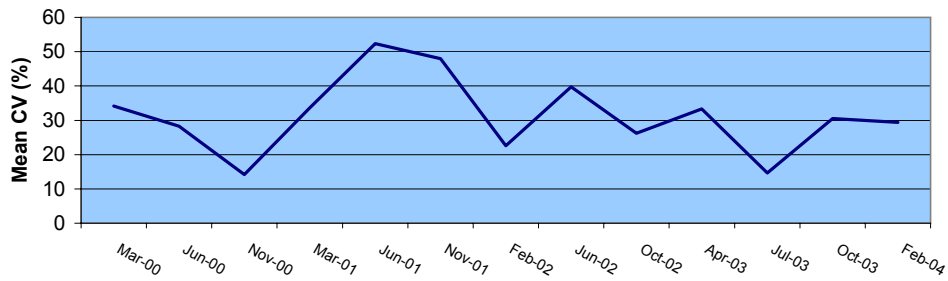
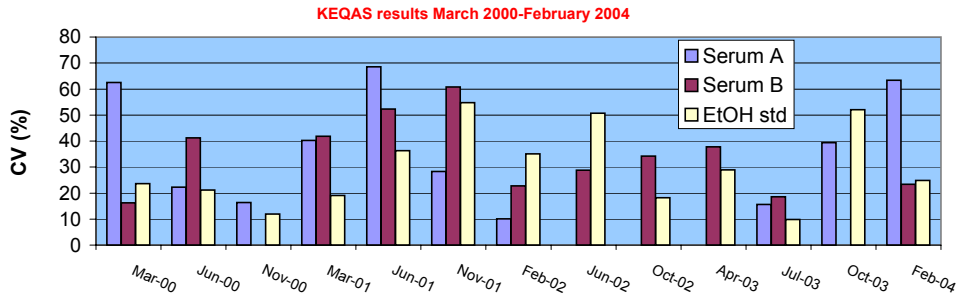
Ethanollic Standard

Group	Result (ng/ml)	SD	SD (%)
2	23.120	0.24	1.01
3	32.380	6.31	26.91
9	24.000	0.39	1.65
11	30.000	4.63	19.74
14	21.650	1.28	5.44
15	24.200	0.53	2.25
16	15.060	5.94	25.31
17	22.000	1.03	4.38
19	14.130	6.59	28.11
20	65.000	29.38	125.26
21	28.000	3.21	13.71
Mean	23.45		





All groups results history



Batch	Date	CV (%)			Mean CV (%)
		Serum A	Serum B	Ethanollic Standard	
13	Mar-00	62.58	16.22	23.59	34.13
14	Jun-00	22.32	41.25	21.20	28.26
15	Nov-00	16.37	na	11.92	14.15
16	Mar-01	40.29	41.85	19.05	33.73
17	Jun-01	68.53	52.32	36.33	52.39
18	Nov-01	28.29	60.78	54.75	47.94
19	Feb-02	10.11	22.71	35.02	22.61
20	Jun-02	na	28.77	50.71	39.74
21	Oct-02	na	34.25	18.20	26.23
22	Apr-03	na	37.77	28.88	33.33
23	Jul-03	15.58	18.58	9.87	14.68
24	Oct-03	39.34	na	52.11	30.48
25	Feb-04	63.42	23.34	24.9	29.44