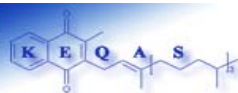


## Batch 26 Generic Results Report

Analysis period: June 2004

Distribution date: 31/07/2004

Nutristasis Unit  
Centre for Thrombosis and Haemostasis  
(The Haemophilia Reference Centre)  
St. Thomas' Hospital  
1st floor, North Wing  
London SE1 7EH  
Email: [domonic.harrington@gstt.sthames.nhs.uk](mailto:domonic.harrington@gstt.sthames.nhs.uk)  
[david.card@gstt.sthames.nhs.uk](mailto:david.card@gstt.sthames.nhs.uk)  
Telephone: +44 (0) 20 718 86816



**Summary**

Phylloquinone concentration (ng/ml)			
	Serum A	Serum B	Ethanollic standard
ALTM	0.33	5.29	10.83

**Z Scores**

- Z < 1.....Good
- 1 < Z < 2.....Satisfactory
- 2 < Z < 3.....Questionable
- Z > 3.....Unsatisfactory

Result of outliers test
No outliers detected in batch 26

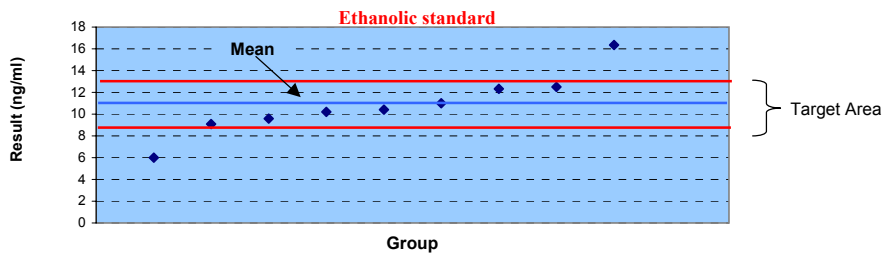
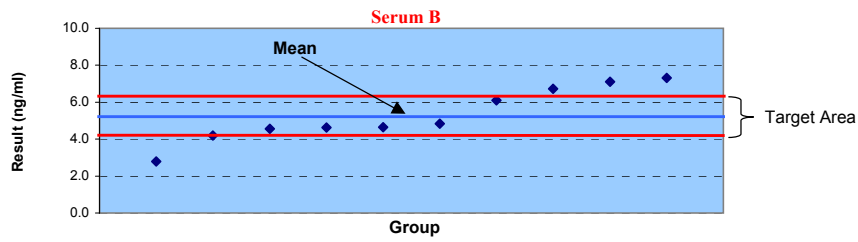
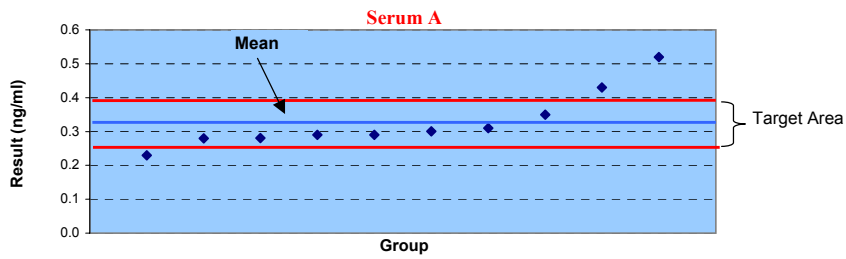
**Key to abbreviations**

na: not applicable
BLD: Below limit of detection (approximately 0.03 ng/ml)
SD: Standard deviation
CV: Coefficient of variance
ALTM: All laboratories' trimmed mean
Target area = + or - 20% of ALTM



**Results and targets**

Group	Serum A (ng/ml)	Serum B (ng/ml)	EtOH std (ng/ml)
2	0.28	4.83	12.31
3	0.31	2.79	9.59
9	0.30	7.10	10.20
11	0.23	6.10	12.50
14	0.29	4.64	10.42
16	0.28	4.55	9.10
17	0.35	4.20	11.00
19	0.43	6.73	16.36
20	0.52	7.31	na
21	0.29	4.62	6.00
Mean	0.33	5.29	10.83
Median	0.30	4.74	10.42
SD	0.09	1.46	2.83
CV (%)	26.07	27.59	26.12





**Z scores**

**Results**

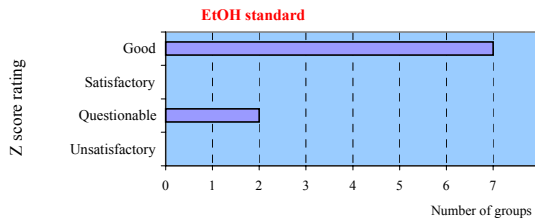
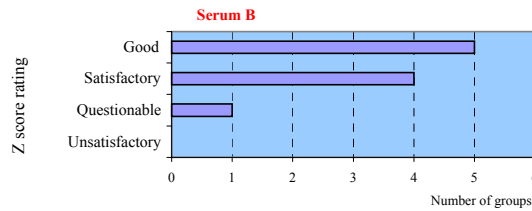
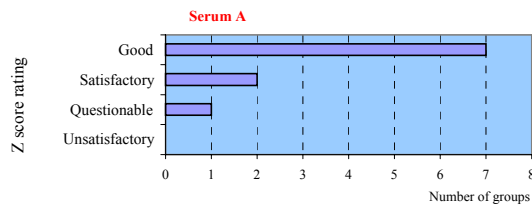
Group	Serum A (ng/ml)	Serum B (ng/ml)	EtOH std (ng/ml)
2	0.28	4.83	12.31
3	0.31	2.79	9.59
9	0.30	7.10	10.20
11	0.23	6.10	12.50
14	0.29	4.64	10.42
16	0.28	4.55	9.10
17	0.35	4.20	11.00
19	0.43	6.73	16.36
20	0.52	7.31	na
21	0.29	4.62	6.00
<b>Mean</b>	0.33	5.29	10.83
<b>Median</b>	0.30	4.74	10.42
<b>SD</b>	0.09	1.46	2.83
<b>CV (%)</b>	26.07	27.59	26.12

**Z scores**

Group	Serum A	Serum B	EtOH std
2	0.73	0.43	0.68
3	0.28	2.36	0.57
9	0.43	1.71	0.29
11	1.49	0.77	0.77
14	0.58	0.61	0.19
16	0.72	0.70	0.80
17	0.33	1.03	0.08
19	1.55	1.36	2.55
20	2.92	1.91	na
21	0.58	0.63	2.23

Z < 1.....Good  
1 < Z < 2.....Satisfactory  
2 < Z < 3.....Questionable  
Z > 3.....Unsatisfactory

$$Z = 5. (X_i - X) / X$$

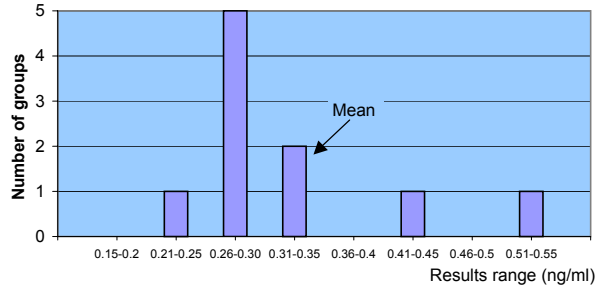




**Distribution of results**

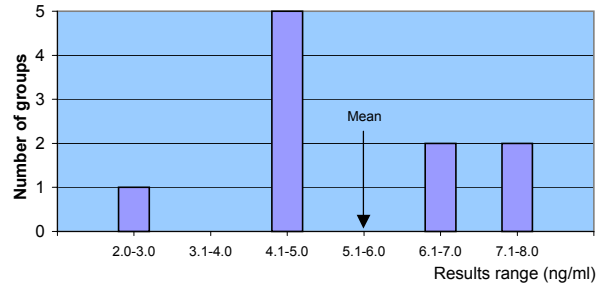
**Serum A**

Group	Result (ng/ml)	SD	SD (%)
2	0.28	0.03	10.37
3	0.31	0.01	3.90
9	0.30	0.02	6.06
11	0.23	0.07	21.14
14	0.29	0.03	8.21
16	0.28	0.03	10.15
17	0.35	0.02	4.72
19	0.43	0.07	21.96
20	0.52	0.14	41.36
21	0.29	0.03	8.21
Mean	0.33		



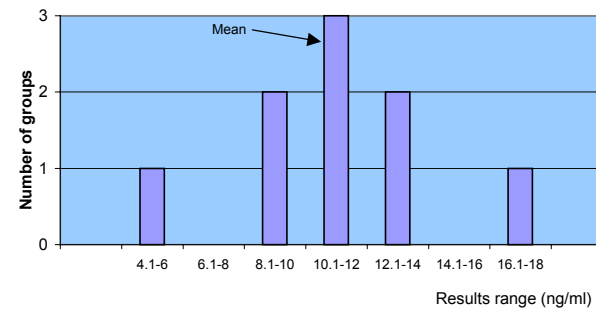
**Serum B**

Group	Result (ng/ml)	SD	SD (%)
2	4.83	0.32	6.11
3	2.79	1.77	33.40
9	7.10	1.28	24.25
11	6.10	0.57	10.87
14	4.64	0.46	8.65
16	4.55	0.52	9.86
17	4.20	0.77	14.54
19	6.73	1.02	19.30
20	7.31	1.43	27.06
21	4.62	0.47	8.92
Mean	5.29		



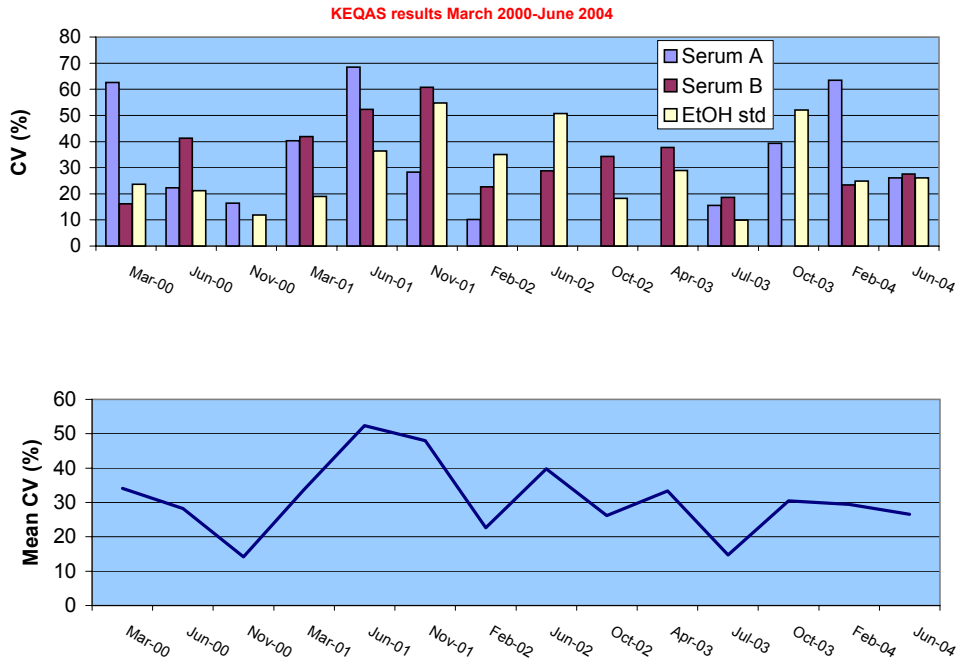
**Ethanollic Standard**

Group	Result (ng/ml)	SD	SD (%)
2	12.31	1.05	9.65
3	9.59	0.88	8.10
9	10.20	0.45	4.12
11	12.50	1.18	10.90
14	10.42	0.29	2.68
16	9.10	1.22	11.30
17	11.00	0.12	1.10
19	16.36	3.91	36.10
20	na	na	na
21	6.00	3.42	31.54
Mean	10.83		





All groups results history



Batch	Date	CV (%)			Mean CV (%)
		Serum A	Serum B	Ethanol Standard	
13	Mar-00	62.58	16.22	23.59	34.13
14	Jun-00	22.32	41.25	21.20	28.26
15	Nov-00	16.37	na	11.92	14.15
16	Mar-01	40.29	41.85	19.05	33.73
17	Jun-01	68.53	52.32	36.33	52.39
18	Nov-01	28.29	60.78	54.75	47.94
19	Feb-02	10.11	22.71	35.02	22.61
20	Jun-02	na	28.77	50.71	39.74
21	Oct-02	na	34.25	18.20	26.23
22	Apr-03	na	37.77	28.88	33.33
23	Jul-03	15.58	18.58	9.87	14.68
24	Oct-03	39.34	na	52.11	30.48
25	Feb-04	63.42	23.34	24.9	29.44
26	Jun-04	26.07	27.59	26.12	26.59

Report prepared by: David Card

Verified by: Mira Wrona

Authorised by: Dominic Harrington