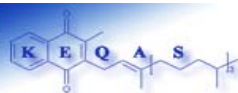


## Batch 27 Results Report

Analysis period: October 2004

Distribution date: 06/12/2004

Nutristasis Unit  
The Centre for Haemostasis and Thrombosis  
(The Haemophilia Reference Centre)  
St. Thomas' Hospital  
1st floor, North Wing  
London SE1 7EH  
Email: [domonic.harrington@gstt.sthames.nhs.uk](mailto:domonic.harrington@gstt.sthames.nhs.uk)  
[david.card@gstt.sthames.nhs.uk](mailto:david.card@gstt.sthames.nhs.uk)  
Telephone: +44 (0) 20 718 86816



**Summary**

Phylloquinone concentration (ng/ml)			
	Serum A	Serum B	Ethanollic standard
ALTM	5.52	BLD	22.87

**Z Scores**

- Z < 1.....Good
- 1 < Z < 2.....Satisfactory
- 2 < Z < 3.....Questionable
- Z > 3.....Unsatisfactory

Result of outliers test
One outlier result detected in batch 27

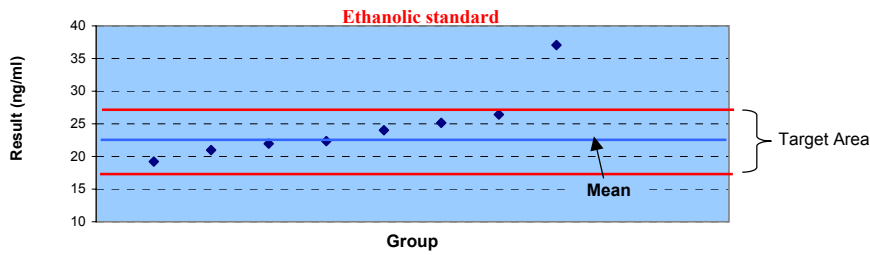
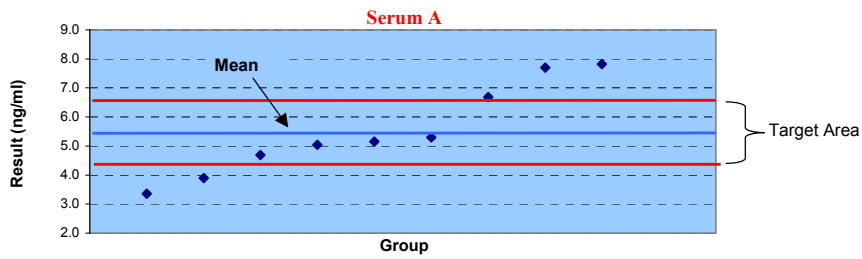
**Key to abbreviations**

na: not applicable
BLD: Below limit of detection (approximately 0.03 ng/ml)
SD: Standard deviation
CV: Coefficient of variance
ALTM: All laboratories' trimmed mean
Target area = + or - 20% of ALTM



Results and targets

Group	Serum A (ng/ml)	Serum B (ng/ml)	EtOH std (ng/ml)
2	5.04	BLD	26.42
3	3.36	0.18	22.34
9	5.30	BLD	19.20
11	7.70	0.13	24.00
16	4.69	BLD	21.96
17	3.90	0.12	21.00
19	6.68	BLD	25.17
20	7.82	0.08	na
21	5.15	0.08	37.07 Outlier
Mean	5.52		22.87
Median	5.15		22.34
SD	1.57		2.49
CV (%)	28.51		10.89





**Z scores**

**Results**

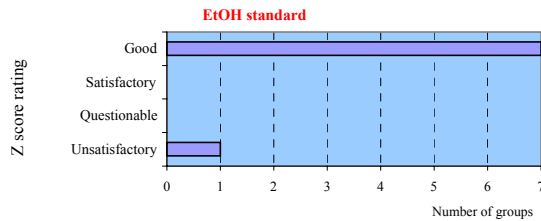
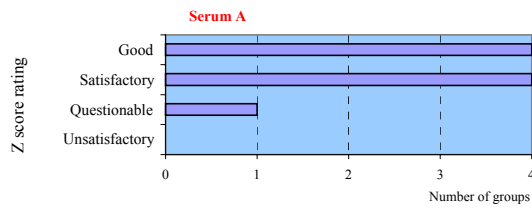
Group	Serum A (ng/ml)	Serum B (ng/ml)	EtOH std (ng/ml)
2	5.04	BLD	26.42
3	3.36	0.18	22.34
9	5.30	BLD	19.20
11	7.70	0.13	24.00
16	4.69	BLD	21.96
17	3.90	0.12	21.00
19	6.68	BLD	25.17
20	7.82	0.08	na
21	5.15	0.08	37.07
Mean	5.52		22.87
Median	5.15		22.34
SD	1.57		2.49
CV (%)	28.51		10.89

**Z scores**

Group	Serum A	EtOH std
2	0.43	0.78
3	1.95	0.12
9	0.20	0.80
11	1.98	0.25
16	0.75	0.20
17	1.46	0.41
19	1.06	0.50
20	2.09	na
21	0.33	3.10

Z < 1.....Good  
1 < Z < 2.....Satisfactory  
2 < Z < 3.....Questionable  
Z > 3.....Unsatisfactory

$$Z = 5. (X_i - \bar{X}) / X$$

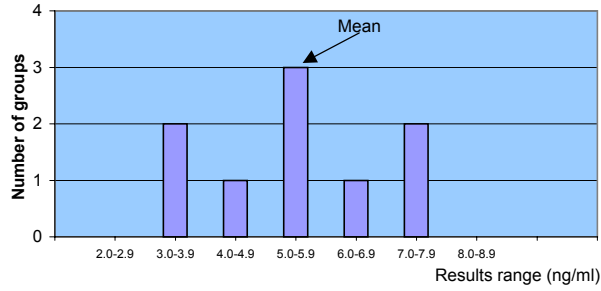




Distribution of results

Serum A

Group	Result (ng/ml)	SD	SD (%)
2	5.04	0.34	6.10
3	3.36	1.52	27.63
9	5.30	0.15	2.76
11	7.70	1.54	28.01
16	4.69	0.58	10.58
17	3.90	1.14	20.71
19	6.68	0.82	14.93
20	7.82	1.63	29.54
21	5.15	0.26	4.69
Mean	5.52		

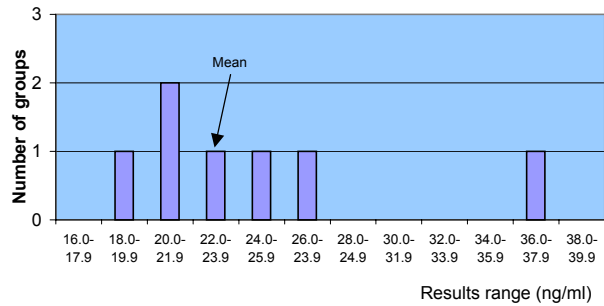


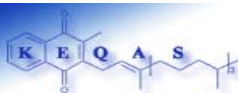
Serum B

Group	Result (ng/ml)	K1 detected?
2	BLD	no
3	0.18	yes
9	BLD	no
11	0.13	yes
16	BLD	no
17	0.12	yes
19	BLD	no
20	0.08	borderline
21	0.08	borderline

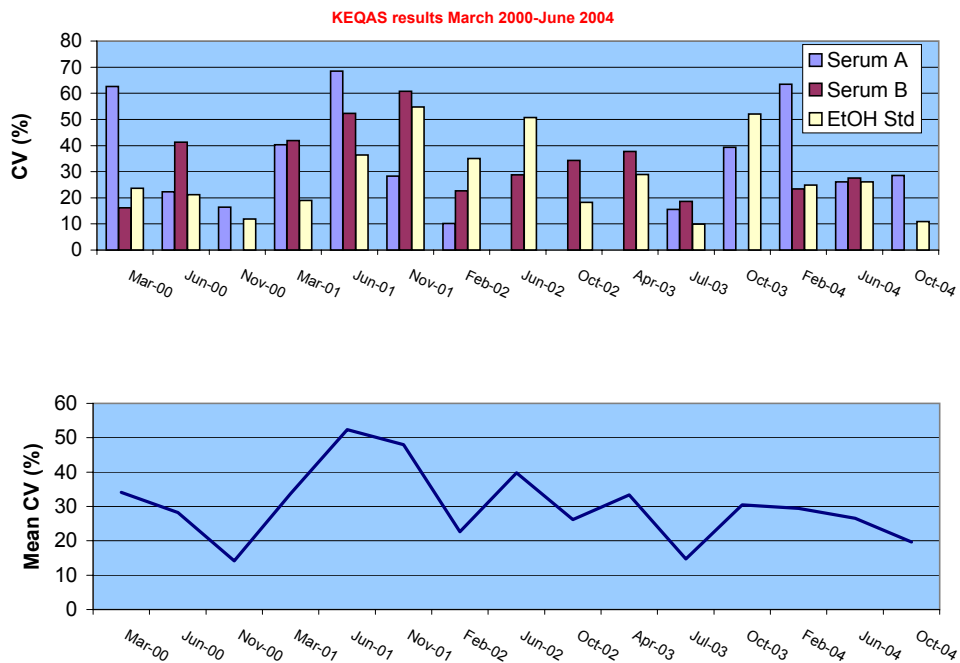
Ethanollic Standard

Group	Result (ng/ml)	SD	SD (%)
2	26.42	2.51	10.98
3	22.34	0.37	1.64
9	19.20	2.60	11.35
11	24.00	0.80	3.49
16	21.96	0.64	2.81
17	21.00	1.32	5.78
19	25.17	1.63	7.11
20	na	na	na
21	37.07	10.04	43.90
Mean	22.87		





All groups results history



Batch	Date	CV (%)			Mean CV (%)
		Serum A	Serum B	Ethanol Standard	
13	Mar-00	62.58	16.22	23.59	34.13
14	Jun-00	22.32	41.25	21.20	28.26
15	Nov-00	16.37	na	11.92	14.15
16	Mar-01	40.29	41.85	19.05	33.73
17	Jun-01	68.53	52.32	36.33	52.39
18	Nov-01	28.29	60.78	54.75	47.94
19	Feb-02	10.11	22.71	35.02	22.61
20	Jun-02	na	28.77	50.71	39.74
21	Oct-02	na	34.25	18.20	26.23
22	Apr-03	na	37.77	28.88	33.33
23	Jul-03	15.58	18.58	9.87	14.68
24	Oct-03	39.34	na	52.11	30.48
25	Feb-04	63.42	23.34	24.9	29.44
26	Jun-04	26.07	27.59	26.12	26.59
27	Oct-04	28.51	na	10.89	19.70

Report prepared by: David Card

Verified by: Donna Roeves

Authorised by: Dominic Harrington