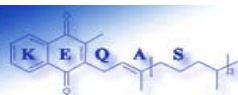


## Batch 28 Results Report

Analysis period: February 2005

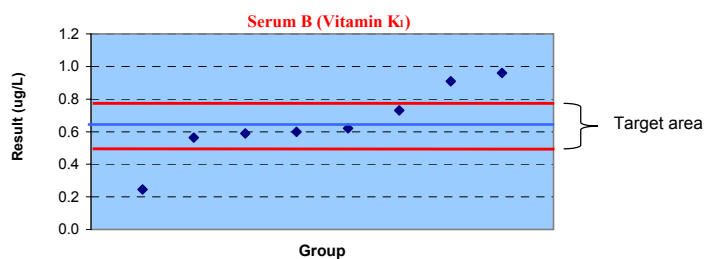
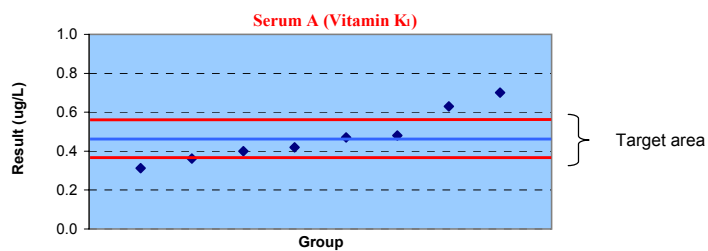
Distribution date: 31/03/2005

Nutristasis Unit  
The Centre for Haemostasis and Thrombosis  
(The Haemophilia Reference Centre)  
St. Thomas' Hospital  
1st floor, North Wing  
London SE1 7EH  
Email: domonic.harrington@gstt.sthames.nhs.uk  
david.card@gstt.sthames.nhs.uk  
Telephone: +44 (0) 20 718 86816



Summary

Group	Serum A		Serum B		EtOH std	Z scores		
	K <sub>1</sub> (ug/L)	K <sub>10</sub> (ug/L)	K <sub>1</sub> (ug/L)	K <sub>10</sub> (ug/L)	K <sub>1</sub> (ug/L)	Group	Serum A	Serum B
2	0.470	1.490	0.730	BLD	BLD	2	0.0	0.6
3	0.313	2.090	0.245	BLD	BLD	3	1.7	3.1
9	0.400	Detected	0.600	BLD	BLD	9	0.8	0.4
11	0.480	n/a	0.910	n/a	BLD	11	0.1	2.0
14	0.420	n/a	0.620	n/a	BLD	14	0.5	0.2
16	0.362	n/a	0.564	n/a	BLD	16	1.2	0.7
19	0.630	2.870	0.960	0.93	BLD	19	1.7	2.4
20	0.700	BLD	0.590	BLD	n/a	20	2.4	0.5
Mean	0.47	2.15	0.65					
Median	0.45	2.09	0.61					
SD	0.13	0.69	0.22					
CV (%)	28.01	32.18	34.20					



Abbreviations and definitions

n/a: Not analysed  
ALTM: All Laboratories Trimmed Mean  
BLD: Below Limit of Detection

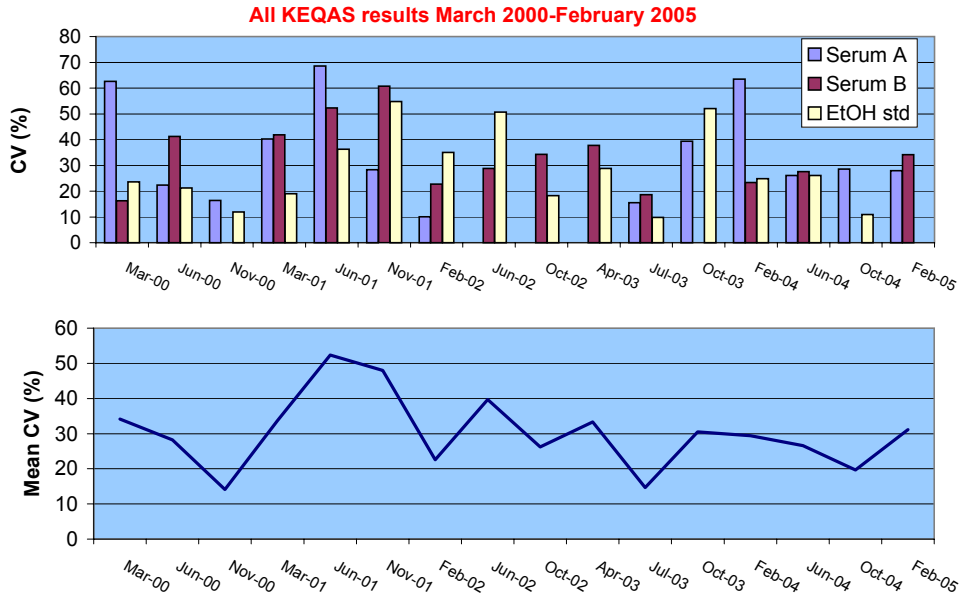
Target area: + or - 20% ALTM

Z Scores

Z < 1.....Good  
1 < Z < 2.....Satisfactory  
2 < Z < 3.....Questionable  
Z > 3.....Unsatisfactory



Results history



Report prepared by: David Card

Verified by: Mira Wrona

Authorised by: Dominic Harrington