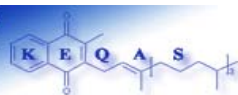


Batch 30 Results Report

Analysis period: October 2005

Distribution date: 01/12/2005

Nutristasis Unit
The Centre for Haemostasis and Thrombosis
(The Haemophilia Reference Centre)
St. Thomas' Hospital
1st floor, North Wing
London SE1 7EH
Email: domonic.harrington@gstt.nhs.uk
david.card@gstt.nhs.uk
Telephone: +44 (0) 20 718 86816

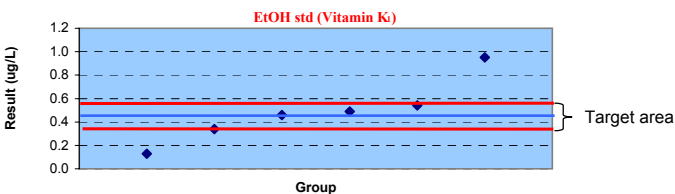
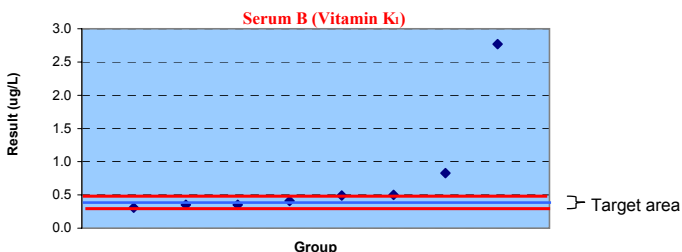
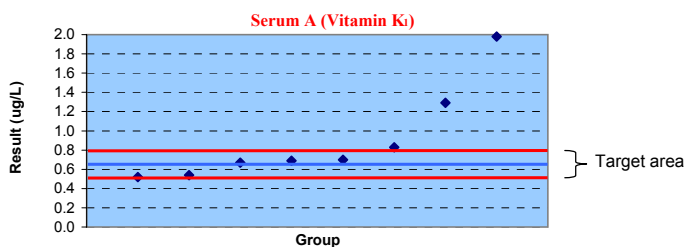


Summary

	Vitamin K ₁ concentration (ug/L)		
	Serum A	Serum B	EtOH std
ALTM	0.659	0.402	0.485

Group	Serum A		Serum B		EtOH std
	K ₁ (ug/L)	K ₁₀ (ug/L)	K ₁ (ug/L)	K ₁₀ (ug/L)	K ₁ (ug/L)
2	0.830	BLD	0.500	1.46	0.460
3	0.520	n/a	0.310	n/a	0.540
11	0.670	n/a	0.350	n/a	0.490
14	0.690	n/a	0.410	n/a	BLD
16	0.543	n/a	0.351	n/a	0.129
17	0.700	n/a	0.490	n/a	0.340
20	1.980	n/a	2.770	n/a	n/a
21	1.290	n/a	0.830	n/a	0.950
Mean	0.659		0.402		0.485
Median	0.680		0.381		0.475
SD	0.11		0.08		0.27
CV (%)	17.3		19.7		55.9

	Z scores		
	Serum A	Serum B	EtOH std
2	1.3	1.2	0.3
3	1.1	1.1	0.6
11	0.1	0.6	0.1
14	0.2	0.1	-
16	0.9	0.6	3.7
17	0.3	1.1	1.5
20	10.0	29.5	-
21	4.8	5.3	4.8



Abbreviations and definitions

n/a: Not analysed
ALTM: All Laboratories Trimmed Mean
BLD: Below Limit of Detection

Target area: + or - 20% ALTM

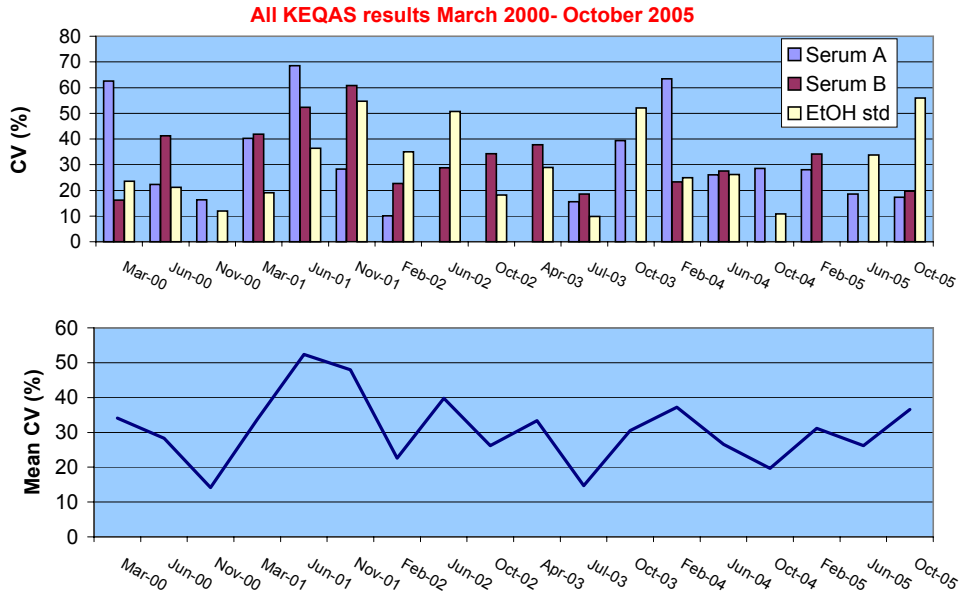
Outliers

Z Scores

Z < 1.....Good
1 < Z < 2.....Satisfactory
2 < Z < 3.....Questionable
Z > 3.....Unsatisfactory



Results history



Report prepared by: David Card

Verified by: Mira Wrona

Authorised by: Dominic Harrington