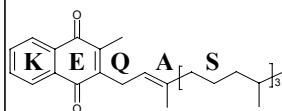


**Vitamin K External Quality Assurance Scheme Results**

Batch 21

01/11/2002

**Your results, Z score and outlier test****Vitamin K concentration (ng/ml)**

	Serum A	Serum B	Ethanollic standard
ALTM	na	0.55	47.30

**Z scores**

Z < 1	Good
1 < Z < 2	Satisfactory
2 < Z < 3	Questionable
Z > 3	Unsatisfactory

na: not applicable

BLD: Below limit of detection (approximately 0.03 ng/ml)

SD: Standard deviation

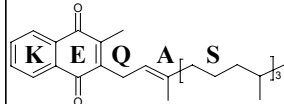
CV: Correlation of variance

Vitamin K Laboratory  
Haemophilia Reference Centre St. Thomas' Hospital  
London SE1 7EH  
Email: domonic.harrington@gstt.sthames.nhs.uk

**Vitamin K External Quality Assurance Scheme Results**

Batch 21

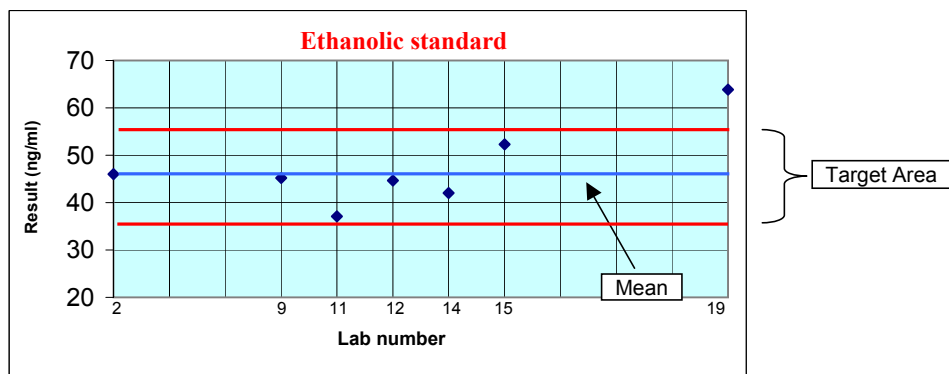
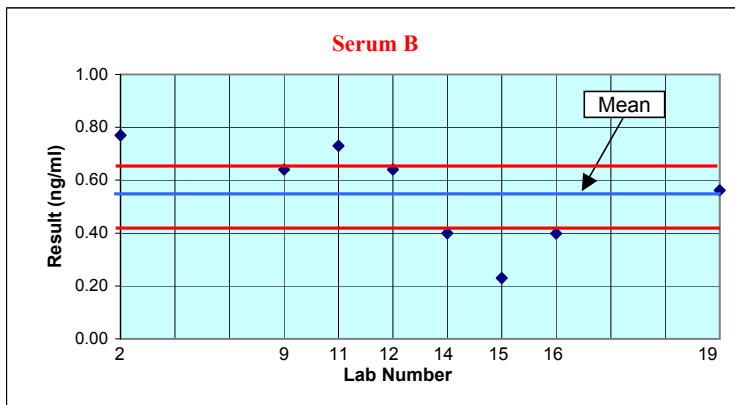
01/11/2002



The Vitamin K External Quality Assurance Scheme

**All laboratories results and targets**

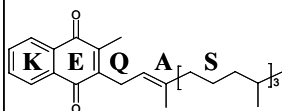
Lab	Serum A (ng/ml)	Serum B (ng/ml)	EtOH std (ng/ml)
2	BLD	0.77	46.01
3			
5			
9	BLD	0.64	45.20
11	0.64	0.73	37.10
12	0.1	0.64	44.63
14	0.04	0.40	42.01
15	BLD	0.23	52.3
16	0.20	0.40	
17			
18			
19	BLD	0.56	63.86
Mean	0.24	0.55	47.30
Median	0.15	0.60	45.20
SD	0.272	0.19	8.61
CV (%)	na	34.25	18.20



**Vitamin K External Quality Assurance Scheme Results**

Batch 21

01/11/2002

**Z scores**

The Vitamin K External Quality Assurance Scheme

**Results**

Lab	Serum A (ng/ml)	Serum B (ng/ml)	EtOH std (ng/ml)
2	BLD	0.77	46.01
3	-	-	-
5	-	-	-
9	BLD	0.64	45.20
11	0.64	0.73	37.10
12	0.1	0.64	44.63
14	0.04	0.40	42.01
15	BLD	0.23	52.3
16	0.20	0.40	-
17	-	-	-
18	-	-	-
19	BLD	0.56	63.86
Mean	0.24	0.55	47.30
Median	0.15	0.60	45.20
SD	0.272	0.19	8.61
CV (%)	na	34.25	18.20

**Z scores (Target SD = 20%)**

Lab	Serum A	Serum B	EtOH std
2	-	2.03	0.14
3	-	-	-
5	-	-	-
9	-	0.85	0.22
11	-	1.67	1.08
12	-	0.85	0.28
14	-	1.33	0.56
15	-	2.88	0.53
16	-	1.35	-
17	-	-	-
18	-	-	-
19	-	0.14	1.75

Serum B target SD = 0.11

EtOH target SD = 9.46

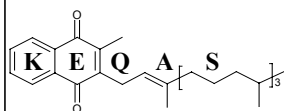
**Z scores**

Z < 1 Good  
 1 < Z < 2 Satisfactory  
 2 < Z < 3 Questionable  
 Z > 3 Unsatisfactory

## Vitamin K External Quality Assurance Scheme Results

Batch 21

01/11/2002



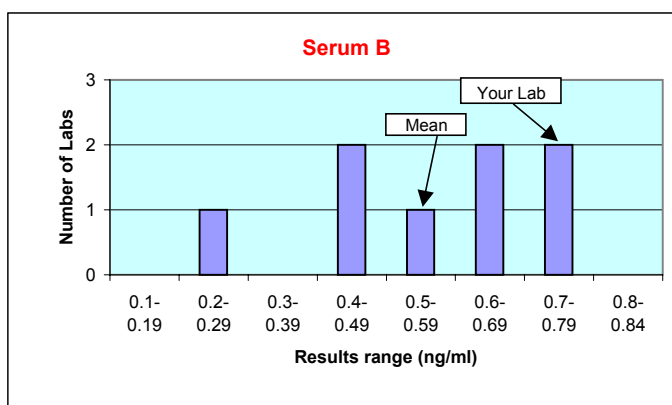
The Vitamin K External Quality Assurance Scheme

### Distribution of results

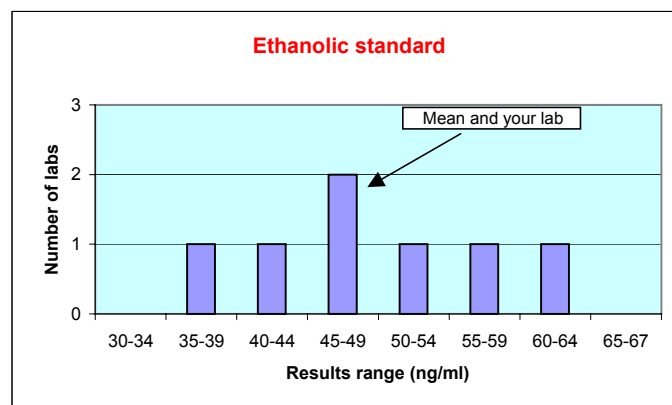
Serum A			
Lab	result (ng/ml)	Detected	Target
2	BLD	x	X
3	-	-	X
5	-	-	X
9	BLD	x	X
11	0.64	✓	X
12	0.1	x	X
14	0.04	✓	X
15	BLD	x	X
16	0.20	✓	X
17	-	-	X
18	-	-	X
19	BLD	X	X

There is no graph for serum A as this result is either detected or not detected.

Serum B			
Lab	result (ng/ml)	SD	CV(%)
2	0.77	0.16	28.96
3	-	-	-
5	-	-	-
9	0.64	0.07	12.14
11	0.73	0.13	23.79
12	0.64	0.07	12.14
14	0.40	0.10	18.93
15	0.23	0.22	40.94
16	0.40	0.10	19.19
17	-	-	-
18	-	-	-
19	0.56	0.01	2.04
Mean =	0.55		



Ethanolic Standard			
Lab	result (ng/ml)	SD	CV(%)
2	46.01	0.91	1.93
3	-	-	-
5	-	-	-
9	45.20	1.49	3.14
11	37.10	7.21	15.25
12	44.63	1.89	3.99
14	42.01	3.74	7.91
15	52.3	3.53	7.47
16	-	-	-
17	-	-	-
18	-	-	-
19	63.86	11.71	24.75
Mean=	47.30	8.61	18.20

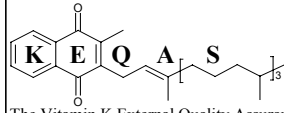


**Vitamin K External Quality Assurance Scheme Results**

Batch 21

01/11/2002

**All laboratories results history**



The Vitamin K External Quality Assurance Scheme

