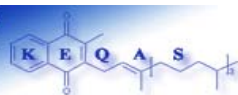


Batch 31 Results Report

Analysis period: March 2006

Distribution date: 01/05/2006

Nutristasis Unit
The Centre for Haemostasis and Thrombosis
(The Haemophilia Reference Centre)
St. Thomas' Hospital
1st floor, North Wing
London SE1 7EH
Email: domonic.harrington@gstt.nhs.uk
david.card@gstt.nhs.uk
Telephone: +44 (0) 20 718 86816



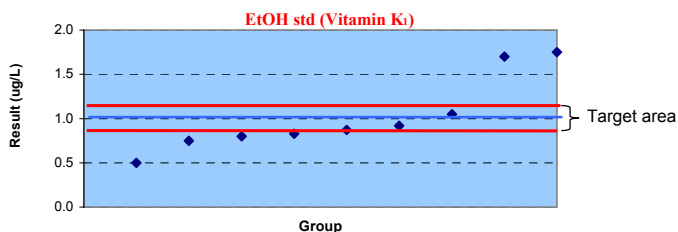
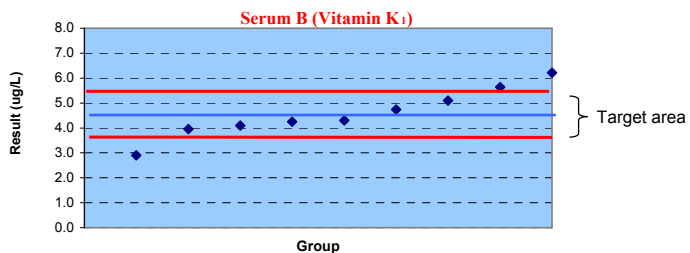
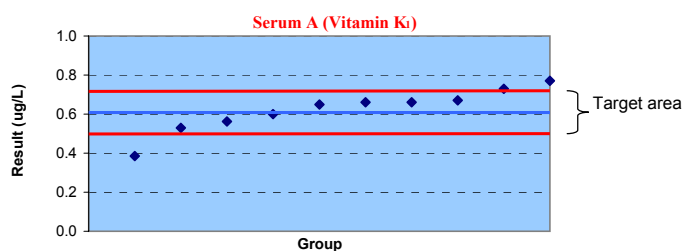
Summary

	Vitamin K ₁ concentration (ug/L)		
	Serum A	Serum B	EtOH std
ALTM	0.622	4.576	1.019

No outliers detected in Batch 31

Group	Serum A		Serum B		EtOH std
	K ₁ (ug/L)	K ₁ O (ug/L)	K ₁ (ug/L)	K ₁ O (ug/L)	K ₁ (ug/L)
2	0.650	BLD	4.740	BLD	0.830
3	0.730	n/a	6.210	n/a	0.750
9	0.600	n/a	2.900	n/a	0.500
11	0.670	n/a	4.250	n/a	1.750
16	0.386	n/a	3.952	n/a	0.870
17	0.530	n/a	4.300	n/a	0.800
19	0.660	n/a	5.100	n/a	0.920
20	0.770	n/a	n/a	n/a	n/a
26	0.563	n/a	4.092	n/a	1.700
28	0.660	n/a	5.640	n/a	1.050
Mean	0.622		4.576		1.019
Median	0.655		4.300		0.870
SD	0.11		0.98		0.43
CV (%)	17.6		21.5		41.9

	Z scores		
	Serum A	Serum B	EtOH std
2	0.2	0.2	0.9
3	0.9	1.8	1.3
9	0.2	1.8	2.5
11	0.4	0.4	3.6
16	1.9	0.7	0.7
17	0.7	0.3	1.1
19	0.3	0.6	0.5
20	1.2	n/a	n/a
26	0.5	0.5	3.3
28	0.3	1.2	0.2



Abbreviations and definitions
n/a: Not analysed
ALTM: All Laboratories Trimmed Mean
BLD: Below Limit of Detection

Target area: + or - 20% ALTM

Z Scores
Z < 1.....Good
1 < Z < 2.....Satisfactory
2 < Z < 3.....Questionable
Z > 3.....Unsatisfactory