

Easy read

Useful information about St Thomas' Hospital



This information is about the shops, restaurants, cafés, museums and services at St Thomas' Hospital.



When you visit St Thomas' Hospital, there is free NHS WiFi.

You can use the internet for free on your laptop or mobile device.

Shops



M&S Food

Where

Main hospital entrance

What

Sandwiches, salads, snacks, microwave meals, hot and cold drinks, bakery, toiletries, flowers and greetings cards

When

Every day, 6:30am to 9pm



Stock Shop

Where

Main hospital entrance

What

Women's clothes and shoes, gifts and toys

When

Monday, 8am to 5.30pm

Tuesday, 8am to 5:30pm

Wednesday, 9am to 5:30pm

Thursday, 8am to 6:30pm

Friday, 9am to 5:30pm

Saturday, 10am to 4pm

Sunday, midday to 4pm



WHSmith

Where

Main hospital entrance

What

Newspapers, magazines, books, greetings cards, sandwiches, snacks, cold drinks, toiletries, toys and games

When

Monday to Friday, 6am to 7pm
Saturday, 8am to 7pm
Sunday, 8am to 6pm



Post Office at WHSmith

Where

Main hospital entrance, inside WHSmith shop

What

A place to post your letters and parcels or buy stamps, packaging and stationery

When

Monday to Friday,
8:30am to 5:30pm
Saturday and Sunday,
9:30am to 4:30pm



The Friends charity shop

Where

Ground floor, Lambeth Wing,
opposite pharmacy

What

Greetings cards, jewellery,
gifts, hospital souvenirs,
puzzles, second-hand books,
stationery and knitted baby
clothes

When

Monday to Friday,
10:30am to 3:30pm
Closed on bank holidays

Restaurant



Toms at Shepherd Hall

Where

Ground floor, South Wing

What

Hot and cold meals, snacks and
drinks

When

Monday to Friday,
7:30am to 3pm
Vending machines,
24 hours every day

Cafés



Toms at Riverside Café

Where

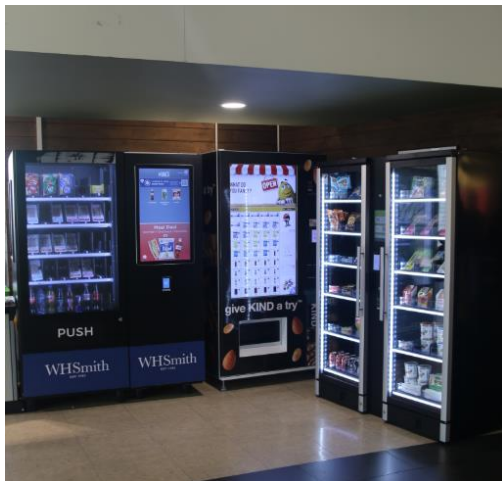
Ground floor, North Wing

What

Hot and cold meals, snacks and drinks to take away

When

Monday to Friday,
7:30am to 3:30pm
Vending machines,
24 hours every day



Costa Coffee

Where

Main hospital entrance

What

Hot and cold drinks,
sandwiches, snacks and
cakes

When

Open 24 hours every day



M&S Café

Where

Main hospital entrance

What

Hot and cold drinks, sandwiches, salads, snacks, fruit and cakes

When

Every day, 6:30am to 8pm

Museums



Mini museum

Where

Central Hall, South Wing

What

A collection of items to celebrate the history of St Thomas' Hospital

When

Open 24 hours every day



Florence Nightingale museum

Where

Ground floor, Gassiot House,
opposite main hospital

What

A museum and gift shop to
celebrate the life of the
famous nurse Florence
Nightingale

When

Tuesday to Sunday,
10am to 5pm

Other places or services



St Thomas' Hospital Chapel

Where

1st floor, South Wing

What

A place to pray, think quietly
or go to religious services

When

Every day, 7am to 8pm



Multi-faith prayer room

Where

Ground floor, South Wing
near Central Hall

What

Room for people of all
religions to pray or think
quietly

When

Open every day

How to get access

Please ask hospital staff if you
want to use the prayer room



Boots outpatient pharmacy

Where

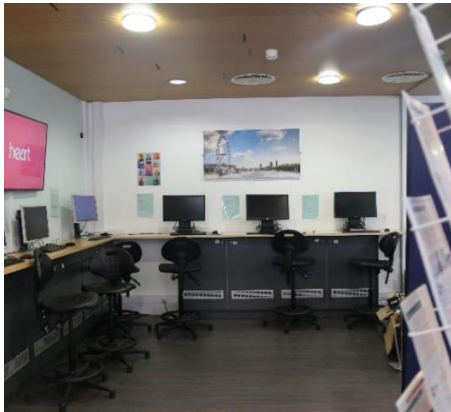
Ground floor, Lambeth Wing

What

A place to collect your
medicines after your hospital
appointment

When

Monday to Saturday,
7am to 10pm
Sunday, 9am to 7pm



Knowledge and Information Centre (KIC)

Where

Ground floor, North Wing corridor next to main lifts

What

A place to get information about the hospital, collect a free disabled parking ticket or use a computer

When

Monday to Friday,
8am to 4pm



Creative Hair Studio

Where

Ground floor, North Wing corridor next to main lifts

What

Hairdressing and beauty services for men and women

When

Tuesday to Thursday,
10am to 7pm
Friday, 10am to 6pm

Phone 020 7188 2814



Changing Places toilet

Where

Lambeth corridor, ground floor, past the main entrance

What

An accessible toilet with extra space and equipment for disabled people

When

24 hours every day

How to get access

Please ask reception for a special key to use the toilet



NatWest cash machine

Where

Main hospital entrance

What

A machine that lets you take cash from your bank account and check how much money is in your account

When

24 hours every day



MediCinema

Where

South Wing lecture theatre,
ground floor, South Wing

What

A free cinema showing the
latest films for people staying
in hospital and their family or
carers

When

Tuesday, 6:30pm (children)

Wednesday, 7pm (adults)

Friday, 6:30pm or 7pm

Speak to someone



If you have any questions
about St Thomas' Hospital, you
can speak to someone.

Call our main reception on
020 7188 7188 for more
information.

Resource number: 3823/VER3

Last reviewed: June 2025

Next review due: June 2028