

GSTT Severe Respiratory Failure Regional Referral Guideline

Criteria for referral of patients with potentially reversible severe acute respiratory failure for consideration of retrieval and ECMO

Potentially reversible aetiology

Adequate gases but inability to achieve lung protective ventilation

- $V_t > 6\text{mL/kg}$ ideal body weight
- $P_{plat} > 30\text{cmH}_2\text{O}$

Refractory respiratory failure despite lung protective ventilation

- Hypoxaemia ($P_{aO_2}:F_{iO_2} < 13.3\text{kPa}$)
- Hypercapnoea ($\text{pH} < 7.2$)

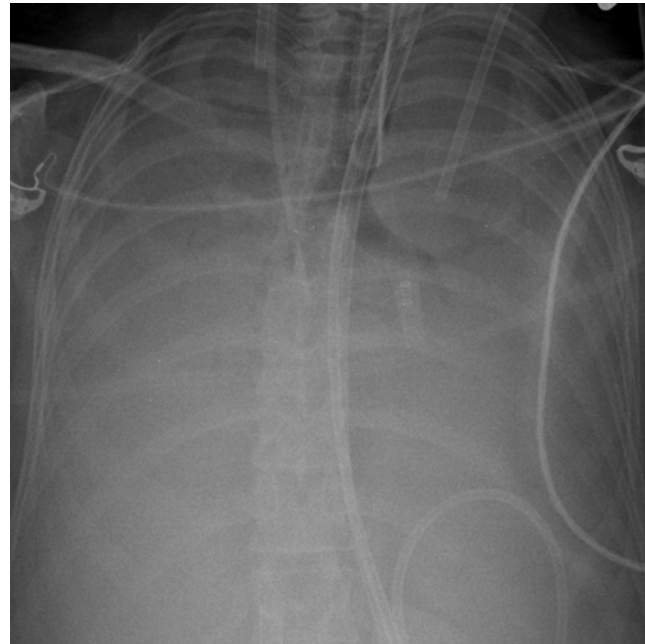
Severe asthma ($\text{pH} < 7.2$)

Murray score of 3 or more

Bronchopleural fistula

7 days or less of

- $F_{iO_2} > 0.8$
- $P_{plat} > 30\text{cmH}_2\text{O}$



**Contact GSTT ICU for advice or to discuss
urgent, consultant retrieval for consideration of ECMO.**

GSTT Intensive Care Unit 02071882511