

Pharmacy Medicines Helpline

If you have any questions or concerns about your medicines, please speak to the staff caring for you or call our helpline.

t: 020 7188 8748, Monday to Friday,
9am-5pm

Your comments and concerns

For advice, support or to raise a concern, contact our Patient Advice and Liaison Service (PALS).

To make a complaint, contact the complaints department.

t: 020 7188 8801 (PALS) **e:** pals@gstt.nhs.uk

t: 020 7188 3514 (complaints)

e: complaints2@gstt.nhs.uk

Language and accessible support services

If you need an interpreter or information about your care in a different language or format, please get in touch. **t:** 020 7188 8815,

e: languagesupport@gstt.nhs.uk

NHS 111

This service offers medical help and advice from fully trained advisers supported by experienced nurses and paramedics. Available over the phone 24 hours a day. **t:** 111, **w:** www.111.nhs.uk

NHS website

This website gives information and guidance on all aspects of health and healthcare, to help you take control of your health and wellbeing.

w: www.nhs.uk

Leaflet number: 2119/VER2

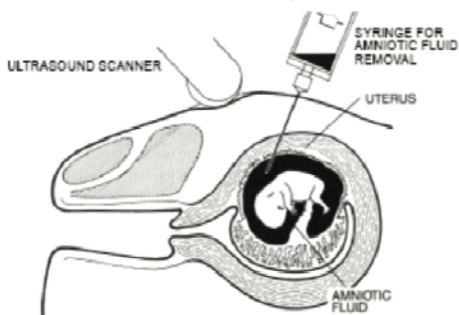
Date published: October 2019

Review date: October 2020

© 2019 Guy's and St Thomas' NHS Foundation Trust

A list of sources is available on request

You will feel pressure on the abdomen as the needle goes in. Most women say this feels uncomfortable but not painful.



What tests are done?

The rapid test to look for Down's syndrome, Patau syndrome or Edward syndrome is done at our regional laboratory. It takes 1-3 days. In the South East Thames region, an Array CGH test) is offered only if needed, and takes two weeks. The sex of the baby may be checked, but only if this is necessary for diagnosis. All results will be given to you.

If you are having a gene test, it may be done at another laboratory. The waiting time for results depends on the specific test.

What is the accuracy?

Amnio gives a clear result most of the time. If a result is unclear, a different test may be suggested. Not all problems can be identified.

Any baby has a three in 100 (3%) chance of being born with problems.

What is the risk?

From experience we know that 1 in 100 (1%) women will miscarry due to amnio. We do not know why this happens or who it will happen to.