

Pharmacy Medicines Helpline

If you have any questions or concerns about your medicines, please speak to the staff caring for you or call our helpline.

t: 020 7188 8748, Monday to Friday, 9am-5pm

Your comments and concerns

For advice, support or to raise a concern, contact our Patient Advice and Liaison Service (PALS). To make a complaint, contact the complaints department.

t: 020 7188 8801 (PALS) **e:** pals@gstt.nhs.uk

t: 020 7188 3514 (complaints)

e: complaints2@gstt.nhs.uk

Language and accessible support services

If you need an interpreter or information about your care in a different language or format, please get in touch.

t: 020 7188 8815

e: languagesupport@gstt.nhs.uk

NHS 111

Offers medical help and advice from fully trained advisers supported by experienced nurses and paramedics. Available over the phone 24 hours a day.

t: 111 **w:** 111.nhs.uk

Leaflet number: 2157/VER2

Date published: May 2019

Review date: May 2020

© 2019 Guy's and St Thomas' NHS Foundation Trust

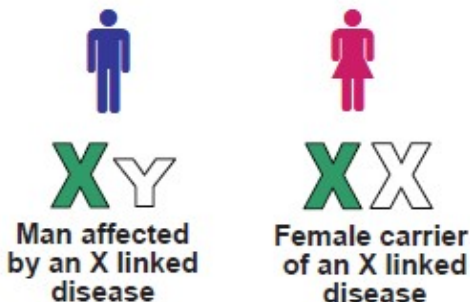
A list of sources is available on request

What does X-linked inheritance mean?

X-linked inheritance describes a genetic condition or disease that is associated with a gene found on an X chromosome.

If a man has an altered gene on his only X chromosome, then he will be affected with the genetic condition as he has only one X chromosome so there is no normal copy of the gene.

If a woman has an altered gene on one of her two X chromosomes, then she will be a carrier of that genetic condition. She is usually healthy because she has a second normal copy of the gene on her other X chromosome.



X = X chromosome with an altered gene

X = a normal X chromosome

Y = a normal Y Chromosome